

# Optimal monetary and fiscal policy without fiscal backing \*

Masayuki Okada †

New York University

**Job Market Paper**

November 5, 2024

Please click [here](#) for the most recent version.

## Abstract

This paper studies optimal monetary and fiscal policy when Treasury is unable to provide fiscal backing to the central bank. The Treasury levies taxes and issues bonds. The central bank issues interest-bearing reserves for their liquidity value. During periods when central bank's interest expenses exceed its earnings, the central bank cannot receive transfers from Treasury to offset the losses. This lack of fiscal backing implies that: (i) the central bank tolerates higher inflation in response to cost-push shocks, and this is exacerbated by the level of reserves and the size of the shock; (ii) while the volatility of the optimal inflation rate increases by 3%, the average optimal inflation rate is minimally affected; (iii) the welfare gains from fiscal backing are small over the business cycle, but in the case of a large shock that raises the wage mark-up by 10%, fiscal backing reduces the welfare cost of the shock by 20%.

---

\*I am deeply indebted to my advisor Ricardo Lagos for his invaluable guidance and support. I am grateful to Jaroslav Borovička, Venky Venkateswaran, Kosuke Aoki, Corina Boar, Mark Gertler, Simon Gilchrist, Nobu Kiyotaki, Virgiliu Midrigan, Tom Sargent, and Kenji Wada for insightful discussion.

†Email: mo2192@nyu.edu

# 1 Introduction

The conventional assumption in macroeconomic models of monetary-fiscal policy is that the monetary and fiscal authorities are part of a “government” with a single (consolidated) budget constraint (Sargent and Wallace, 1981). The starting point of this paper is a departure from the conventional assumption of a consolidated government budget. Under the Federal Reserve Act, when income exceeds expenses, the Federal Reserve is required to transfer these profits to the Treasury. However, when expenses exceed income, the Treasury does not compensate the Federal Reserve for these losses. For example, since September 2022 until now, the Federal Reserve has been incurring significant interest expenses on large reserves (5% per annum on more than \$3 trillion dollars), and transfers from the Treasury have been zero. The Fed’s cumulative net loss over this time period is \$210 billion; 0.7% of GDP. If the Treasury had to offer fiscal backing for these losses, it would have to transfer the equivalent of 4.7% of the Treasury’s annual tax revenue. These facts motivate my interest in situations in which the budgets of the monetary and fiscal authorities are unconsolidated in the sense that transfers from the central bank to the Treasury are restricted to be nonnegative (or negative but small in absolute value).

This paper studies the implications of the lack of optimal fiscal backing for central bank on the optimal conduct of monetary and fiscal policy. I develop the optimal monetary-fiscal policy problem under discretion where the government chooses policies to maximize household utility subject to implementable equilibrium conditions. The novelties are that 1) the government can issue two types of interest-bearing liabilities: bonds as in the conventional model, and central bank’s reserves as a new ingredient, which provide liquidity, 2) transfers from Treasury to central bank are constrained by a lower bound.

Section 2 presents the model. Households consume, work, and trade bonds and reserves. Bonds and reserves provide liquidity value. Firms are modeled as in the standard New Keynesian framework with adjustment costs in changing prices, using labor for production, and facing cost-push and productivity shocks. Treasury finances public expenditures through bonds and distortionary taxes on firms’ sales. In addition to this standard tax smoothing mechanism, my model includes the remittance from central bank, allowing the Treasury to rely on transfers. The central bank supplies reserves to the market and pays interest. A high nominal interest rate on large reserves leads to central bank’s loss, making transfers from the Treasury optimal.

The goal of this research is to compare the optimal monetary and fiscal policies between the two models: a “consolidated model” and an “unconsolidated model”. The former assumes no constraint on transfers; a fully consolidated government budget. The central bank is fiscally backed by the Treasury, allowing interest payments by the central bank to be financed through transfers from the Treasury. The second model imposes a constraint on transfers that prevents central bank from reducing large reserves and paying interest expenses.

The first main finding is that, in response to a negative productivity shock, the optimal policy response for the central bank without fiscal backing is to tolerate higher inflation. The logic is as follows: a negative productivity shock raises marginal costs, leading to a higher inflation rate. In the consolidated model, the central bank raises the nominal interest rate to align the policy rate with the natural rate. As a result, both the output gap and the inflation response shrink to zero. In the unconsolidated model, however, the central bank does not raise the interest rate enough due to the lack of fiscal backing to cover interest expenses. Consumption falls less than in the consolidated model, and inflation rate responds more.

The second main result is that, in the case of a cost-push shock, the lack of *fiscal* backing constrains optimal *fiscal* policy. This is in sharp contrast to a negative productivity shock, where optimal *monetary* policy is constrained. The logic is as follows: A cost-push shock raises marginal costs of labor. To bring the marginal product of labor closer to the higher marginal cost, the government lowers the sales tax rate. In the consolidated model, this reduction in tax revenue motivates the central bank to support the Treasury by issuing more reserves, raising funds from the private sector, and transferring them to the Treasury. These increased reserves must later be reduced by receiving funds from the Treasury. In the unconsolidated model, however, the central bank anticipates that it will not be able to reduce large reserves through remittances in the future, which limits its willingness to issue additional reserves. Consequently, the reduced central bank’s support for the Treasury leads to a smaller tax cut in the unconsolidated model, resulting in a higher marginal cost and a higher inflation rate.

Section 6 examines the moments of optimal inflation rate over the business cycle (Chari, Christiano, and Kehoe, 1991; Schmitt-Grohé and Uribe, 2004). A key question is how much the government reduces nominal liabilities by higher inflation. While the government can use inflation to stabilize nominal liabilities, inflation entails costs due to sticky prices. I find that the lack of fiscal

backing increases the volatility of the optimal inflation rate by 3%. Since the lack of fiscal backing limits the optimal monetary and fiscal policy to stabilize the shock, the inflation rate is more volatile. What happens to average inflation rate? The average optimal inflation rate in the unconsolidated model is 0.05 percentage points higher than in the consolidated model. Higher inflation rate is optimal because reserves cannot be reduced by remittance, so the government reduce the real value of reserves by higher inflation. However, as found in [Schmitt-Grohé and Uribe \(2004\)](#), the benefit of reducing liabilities by inflation is much smaller than the cost of sticky prices. The lack of fiscal backing impacts average inflation rate much less, though it impacts the volatility.

Section 7 evaluates the welfare gain of fiscal backing for the central bank. Some central banks, including the Bank of England, receive remittances from the Treasury when they incur losses. While some central bankers are concerned about this policy due to financial independence considerations, others emphasize its advantages in stabilizing the central bank's net worth<sup>1</sup>. This paper estimates the welfare gain of fiscal backing for the central bank and finds that the conditional welfare gain can be substantial. For example, following a large shock that increases the wage mark-up by 10%, the welfare loss from the shock is 20% lower in a model with fiscal backing compared to one without, as measured in consumption equivalence. Although the conditional welfare gain is significant, the welfare gain of fiscal backing for the central bank over the business cycle is small—less than 0.01% in terms of consumption equivalence. While fiscal backing impacts the volatility of macroeconomic variables, it has minimal effect on the mean, leading to a quantitatively small welfare gain over the business cycle.

**Related literature** First, this article is closely related to the large literature on monetary-fiscal policy interactions ([Sargent and Wallace \(1981\)](#); [Leeper \(1991\)](#); [Sims \(1994\)](#); [Woodford \(2001\)](#), among others). [Sargent and Wallace \(1981\)](#) is the seminal paper that highlights the implications of a consolidated government budget, showing that the Treasury's budget affects the central bank's ability to control inflation. Since then, the assumption of a consolidated government budget constraint has become a common framework in the literature. This paper questions that assumption, motivated by recent events in the United States, where remittances from Treasury to central bank were positive while the central bank makes profits, but have been zero since the central bank started making losses in 2022.

---

<sup>1</sup>See [Floden \(2022\)](#) and [Bullock \(2022\)](#).

Some recent studies have considered the unconsolidated budgets of the Treasury and the central bank. These papers study various issues, including central bank solvency ([Hall and Reis, 2015](#); [Bassetto and Messer, 2013](#); [Bassetto and Sargent, 2020](#)), price determinacy ([Del Negro and Sims, 2015](#); [Benigno and Nisticò, 2020](#)), the effectiveness of central bank asset purchase policies ([Benigno, 2020](#)), the impact of helicopter drops ([Amador and Bianchi, 2023](#)), the projected path of central bank net worth and earnings ([Christensen, Lopez, and Rudebusch, 2015](#); [Carpenter, Ihrig, Klee, Quinn, and Boote, 2018](#)), and the empirical relationship between central bank losses or negative net worth and monetary policy conduct ([Stella, 2005, 2008](#); [Goncharov, Ioannidou, and Schmalz, 2023](#)). This paper is the first to focus on the lack of fiscal backing for central bank. Also, the existing literature has focused exclusively on the positive implications of unconsolidated budgets. This is the first paper to study the normative implications of unconsolidated government budget. A novel finding of this paper is that the lack of fiscal backing limits the optimal fiscal policy, although fiscal policy is kept as simple in the literature, such as assuming a lump-sum tax.

Previous literature has focused on estimating how much seigniorage would be required to balance the central bank's budget, finding that the required inflation rate is substantial ([Del Negro and Sims, 2015](#)). In contrast, this paper examines a situation in which the government can optimally choose not only inflation, but also the nominal interest rate, asset purchase policy, and tax rate to satisfy central bank's budget. The results show that while the welfare cost of not having fiscal backing is small during a typical business cycle, it becomes significantly larger in the face of a larger shock.

Moreover, the literature on unconsolidated government lacks a comprehensive analysis of fiscal policy within the optimal policy framework. While existing studies tend to focus on the monetary side and keep the fiscal side simple, such as a lump-sum tax ([Del Negro and Sims, 2015](#); [Benigno, 2020](#)), this paper models the tax smoothing motive by introducing distortionary taxes. I show that central bank policies influence optimal fiscal policies, such as taxation and bond issuance. In this respect, this paper follows the conclusions of the traditional monetary-fiscal policy literature, which emphasizes that monetary and fiscal policies constrain each other ([Sargent and Wallace \(1981\)](#); [Leeper \(1991\)](#), and more recently [Bianchi \(2013\)](#); [Bianchi and Ilut \(2017\)](#)).

The closest papers are [Berriel and Bhattarai \(2009\)](#) and [Amador and Bianchi \(2023\)](#). [Berriel and Bhattarai \(2009\)](#) study optimal policy in a New Keynesian framework. [Berriel and Bhattarai \(2009\)](#) assume that the government's objective function directly includes central bank's losses. This paper

does not directly incorporate the welfare loss from a destabilized central bank net worth. Instead, the government in my model is concerned with the central bank's balance sheet because the price of reserves must be lower to incentivize households to hold excess reserves. Additionally, [Berriel and Bhattarai \(2009\)](#) do not consider a constraint on transfers from the Treasury to the central bank.

[Amador and Bianchi \(2023\)](#) is the only other paper that models the constraint on transfers from the Treasury to the central bank but it focuses on helicopter drops during a liquidity trap from a positive perspective. It finds that helicopter drops can be an effective stabilization policy in a liquidity trap when the central bank faces constraints on resource allocation. In contrast, my paper approaches monetary-fiscal policy from a normative perspective, examining the optimal policy responses under these constraints.

This paper is also related to the literature on central bank balance sheet policies. The literature has extensively examined central banks' asset policies.<sup>2</sup> In contrast, my paper emphasizes the liability side of central bank's balance sheet.

In terms of liability policies, this paper also relates to studies on the macroeconomic implications of large reserves ([Poole, 1968](#); [Cochrane, 2014](#); [Reis, 2016](#); [Ennis, 2018](#); [Williamson, 2019](#); [Arce, Nuno, Thaler, and Thomas, 2020](#); [Bianchi and Bigio, 2022](#)). [Ennis \(2018\)](#) finds that price level indeterminacy may arise when banks hold excess reserves. [Reis \(2016\)](#) finds that only the interest on reserves and not the size of the balance sheet has an effect on inflation. [Arce et al. \(2020\)](#) proposes a New Keynesian equilibrium model to compare the pre-crisis lean balance sheet regime and the post-crisis floor system with a large balance sheet. [Bianchi and Bigio \(2022\)](#) study the credit channel of monetary policy in a model where banks manage liquidity facing frictions in the interbank market.

The contribution of this paper lies in examining the implications of excess reserves within the standard New Keynesian framework. Unlike papers which delve into the microstructure of interbank lending and payments ([Afonso and Lagos, 2015](#); [Lagos and Navarro, 2023](#)), this paper simplifies the demand for reserves by introducing them directly into household utility and models in detail a general equilibrium New Keynesian model, with a particular focus on (i) fiscal policy, including distortionary taxes and bonds, and (ii) transfers between the Treasury and the central bank. While much of the literature on large reserves overlooks fiscal considerations, this paper emphasizes the

---

<sup>2</sup>For theoretical papers, see [Gertler and Karadi \(2011\)](#); [Curdia and Woodford \(2011\)](#), among others; for empirical studies, see [Krishnamurthy and Vissing-Jorgensen \(2011\)](#); [D'Amico and King \(2013\)](#), among others.

importance of the central bank's fiscal backing for fiscal policy.

The closest works in this literature are [Berentsen, Marchesiani, and Waller \(2014\)](#) and [Berentsen, Kraenzlin, and Müller \(2018\)](#), as both highlight that the implications of excess reserves critically depend on the level of fiscal support provided to the central bank. [Berentsen, Kraenzlin, and Müller \(2018\)](#) finds that when the central bank lacks fiscal support, reducing reserves is the optimal policy. They compare the floor system and the channel system from a normative perspective and conclude that the floor system is superior when there is fiscal backing. While [Berentsen, Kraenzlin, and Müller \(2018\)](#) explores regimes of full fiscal support and no fiscal support, this paper assumes a lack of *optimal* fiscal support, where there is no constraint on transfers to the Treasury, but transfers to the central bank are constrained. This assumption is more closely aligned with the current policy of the Federal Reserve.

Finally, this paper contributes to the literature on optimal monetary and fiscal policy. The literature focuses on (i) the optimal volatility and persistence of inflation ([Chari, Christiano, and Kehoe, 1991](#); [Schmitt-Grohé and Uribe, 2004](#); [Siu, 2004](#); [Chugh, 2006, 2007](#)), (ii) the temptation to erode government nominal liabilities through inflation ([Schmitt-Grohé and Uribe, 2004](#); [Niemann, Pichler, and Sorger, 2013](#); [Leeper, Leith, and Liu, 2021](#)), and (iii) the stochastic behavior of debt ([Barro, 1979](#); [Lucas and Stokey, 1983](#); [Aiyagari, Marcet, Sargent, and Seppälä, 2002](#); [Schmitt-Grohé and Uribe, 2004](#); [Benigno and Woodford, 2003](#)), particularly examining whether debt follows a random-walk property regardless of the shock process.

The existing literature abstracts from the issues of fiscal backing and reserves, which are another form of interest-bearing government liabilities. This paper incorporates both and examines whether the conventional results in the literature change. The findings indicate that, without fiscal backing: (i) the optimal volatility of the inflation rate is higher, (ii) the government uses inflation to erode reserves, and (iii) the stock of reserves becomes more persistent while the stock of bonds is less persistent.

**Layout** The rest of the paper is organized as follows. Section 2 describes the model and defines the private sector equilibrium. Section 3 formulates the government's problem. Section 4 discusses parametrization and the solution method. Sections 5 and 6 show numerical results. Section 7 shows the welfare analysis. Section 8 concludes.

## 2 Model

This section describes the model and defines the equilibrium. The model is a standard New Keynesian framework incorporating both the Treasury's and the central bank's budget constraints. Before presenting the model, I define key terminology. "Government" refers to an agent that chooses both monetary and fiscal policies, with the objective of maximizing household utility. The problem for the government is defined in section 3. The "Treasury" and "central bank" can be considered to be subsets of the government, each with its own budget constraint. The Treasury collects taxes, provides public expenditure, and issues liabilities: "bonds". The central bank issues another form of liability: "reserves". These two types of liabilities, reserves and bonds, are distinguished by issuers.

### 2.1 Households

Representative households choose consumption, labor supply, and the holdings of one period risk-free nominal reserves and long-duration risk free nominal bonds to maximize the expected discounted sum of the future period utilities. The households get a convenience yield from trading both reserves and bonds. Households maximize

$$\max_{\{C_t, N_t, D_t, B_t^H\}_{t=0}^{\infty}} E_0 \sum_{t=0}^{\infty} \beta^t \left[ \frac{1}{1-\sigma} C_t^{1-\sigma} - \frac{1}{1+\nu} N_t^{1+\nu} + \frac{\chi_1}{1-\gamma_1} \left( Q_t^C \frac{D_t}{P_t} \right)^{1-\gamma_1} + \frac{\chi_2}{1-\gamma_2} \left( Q_t^T \frac{B_t^H}{P_t} \right)^{1-\gamma_2} \right], \quad (1)$$

where  $C_t$  is a Dixit-Stiglitz aggregate consumption of a continuum of differentiated goods,

$$C_t \equiv \left[ \int_0^1 c_t(i)^{\frac{\theta}{\theta-1}} di \right]^{\frac{\theta-1}{\theta}} \quad (2)$$

with an elasticity of substitution equal to  $\theta > 1$ . Also,  $N_t$  is the labor supply,  $Q^C$  is the price of the reserves,  $D$  is the quantity of reserves in nominal,  $Q^T$  is the price of bonds,  $B^H$  is the quantity of bonds in nominal held by the households,  $P_t$  is the price of consumption goods.

Each differentiated good is supplied by a monopolistically competitive producer. The goods in each industry  $i$  are produced using labor that is specific to that industry. The representative



households supply all types of labor as

$$N_t = \int_0^1 N_t(i) di. \quad (3)$$

Households receive a convenience yield from holding reserves and bonds. The convenience yield from reserves can be interpreted as the expected savings in transaction costs for commercial banks, as they do not need to sell loans to manage deposit outflows. Assuming that households own these commercial banks, they value the reduction in transaction costs that benefits the households. An example of the convenience yield from holding bonds is that Treasury securities lower the costs associated with transacting in less liquid securities, such as corporate bonds.<sup>3</sup> The convenience yield terms enable the model to match the steady-state values for both reserves and bonds, which critically influences interest expenses and is essential for quantitative analysis.

The budget constraint is

$$P_t C_t + Q_t^C D_t + Q_t^T B_t^H = D_{t-1} + (1 + \rho^T Q_t^T) B_{t-1}^H + w_t N_t + P_t \Phi_t, \quad (4)$$

where  $\Phi_t$  is the profit from the goods producers. In period  $t$ , the households buy bonds  $B^H$  at price  $Q_t^b$  that pay a declining coupon of  $\rho^{Tj}$  dollars in period  $j + 1$ , where  $0 \leq \rho \leq \beta^{-1}$  (Woodford, 2001). A measure of the duration of the bond is given by  $(1 - \beta\rho^T)^{-1}$ . The households bring nominal bonds of  $(1 + \rho^T Q_t^b) B_{t-1}^H$  into period  $t$ .

The prices of reserves,  $Q_t^C$ , and bonds,  $Q_t^T$ , are the policy instrument for the government.

## 2.2 Firms

There is a continuum of goods producers indexed by  $i \in [0, 1]$ . Firms use labor as an input and produce imperfectly substitutable goods according to a linear production function. Each firm sets the price of its own good to maximize the expected discounted sum of future profits.

Firms  $i$  face three constraints. A linear production function,

$$y_t(i) = A_t N_t(i), \quad (5)$$

---

<sup>3</sup>For more discussion of convenience yield, see Lopez-Salido and Vissing-Jorgensen (2023) for reserves and Krishnamurthy and Vissing-Jorgensen (2012) for bonds among others.

where  $A_t$  is the exogenous aggregate productivity, a demand curve of the form

$$y_t(i) = Y_t \left( \frac{p_t(i)}{P_t} \right)^{-\theta}, \quad (6)$$

where the aggregate demand is defined as

$$y_t(i) = \left( \int_0^1 y_t(j)^{\frac{\epsilon-1}{\epsilon}} dj \right)^{\frac{\epsilon}{\epsilon-1}}, \quad (7)$$

and quadratic adjustment costs in changing prices, as in [Rotemberg \(1982\)](#), that are defined as

$$\frac{\varphi}{2} \left( \frac{p_t(i)}{p_{t-1}(i)} - 1 \right)^2 P_t Y_t, \quad (8)$$

where  $\varphi$  is the degree of nominal price rigidity.

Firm  $i$  sets its price  $p_t(i)$  in period  $t$  to maximize the expected discounted sum of future profits,

$$\max_{p_t(i)} E_0 \sum_{t=0}^{\infty} \beta^t \Lambda_t \left( (1 - \tau_t) p_t(i) y_t(i) - \mu_t^w w_t N_t(i) - \frac{\varphi}{2} \left( \frac{p_t(i)}{p_{t-1}(i)} - 1 \right)^2 P_t Y_t \right), \quad (9)$$

where  $\Lambda_t$  is the stochastic discount factor given by

$$\Lambda_t \equiv \frac{C_t^{-\sigma}}{P_t}. \quad (10)$$

The stochastic discount factor measures the marginal value of an additional unit of profits to the household.  $\tau_t$  is the tax on sales levied by the Treasury.  $\mu_t^w$  captures the shock to wage mark-up. One possible interpretation of the wage markup shock is that it represents the bargaining power of labor unions. There is no heterogeneity in the time-zero prices across firms. That is  $p_{-1}(i) = P_{-1}$  for a given constant  $P_{-1}$ .

The cost-push shock and productivity follow an AR(1) process.

$$\mu_t^w = \bar{\mu}^w + \rho^w (\mu_{t-1}^w - \bar{\mu}^w) + \varepsilon_t^w. \quad (11)$$

$$A_t = \bar{A} + \rho^a(A_{t-1} - \bar{A}) + \varepsilon_t^a, \quad (12)$$

where  $\varepsilon_t^w$  and  $\varepsilon_t^a$  are shocks and are distributed with mean zero and standard deviation  $\sigma_w$  and  $\sigma_a$ . Parameters  $\bar{\mu}^w$  and  $\bar{A}$  are the mean value of wage mark-up and productivity that are equal to one. The first-order condition implies the non-linear Phillips curve

$$N_t C_t^{-\sigma} (\varphi(\pi_t - 1)\pi_t A_t - (1 - \theta)(1 - \tau_t)A_t - \theta \mu_t^w N_t^\nu C_t^\sigma) = \beta E_t [A_{t+1} N_{t+1} C_{t+1}^{-\sigma} \varphi(\pi_{t+1} - 1)\pi_{t+1}]. \quad (13)$$

### 2.3 Treasury and central bank

The government's problem is introduced in the next section. This section describes three constraints that the government faces: Treasury's budget, central bank's budget, and a constraint on transfers from Treasury to central bank.

The Treasury finances exogenous, stochastic, and useless public expenditures  $G_t$ . Aggregate public expenditure is

$$G_t \equiv \left( \int_0^1 G_t(i)^{\frac{\epsilon-1}{\epsilon}} di \right)^{\frac{\epsilon}{\epsilon-1}} \quad (14)$$

such that the government demand for goods is given by

$$G_t(i) = \left( \frac{P_t(i)}{P_t} \right)^{-\epsilon} G_t \quad (15)$$

The exogenous public expenditure follows an AR(1) process,

$$G_t = \bar{G} + \rho^g(G_{t-1} - \bar{G}^w) + \varepsilon_t^g. \quad (16)$$

The expenditures are financed by a sales tax, issuance of bonds, and a remittance from the central bank. The Treasury's budget constraint is given by

$$Q_t^T B_t^T + \tau_t P_t Y_t + P_t H_t = P_t G_t + (1 + \rho^T Q_t^T) B_{t-1}^T. \quad (17)$$

$\tau_t Y_t$  is the distortionary tax on sales.  $H_t$  is the remittance from central bank to Treasury. A positive  $H_t$  implies that the central bank transfers to the Treasury.  $B^T$  is the total supply of bonds. The bonds are held by households and central bank. They are denoted by  $B_t^H$  and  $B_t^C$ .

The central bank's role is to supply reserves that households appreciate. In addition to reserves, the central bank also trades bonds. The central bank budget constraint is

$$Q_t^C D_t + (1 + \rho^T Q_t^T) B_{t-1}^C = D_{t-1} + Q_t^T B_t^C + P_t H_t, \quad (18)$$

where  $D_t$  are reserves and  $H_t$  is the remittance from central bank to Treasury.  $B_t^C$  are bonds held the central bank.

The left-hand side of the budget constraint represents the income for central bank. The central bank generates revenue by issuing more reserves ( $Q_t^C D_t$ ), through income gains from bonds holdings ( $B_{t-1}^C$ ), and through capital gains from bonds holdings ( $\rho^T Q_t^T B_{t-1}^C$ ). As bonds are long-duration bonds, revenues from them are separated into income gain and capital gain. This models a capital loss from central bank's asset holding. When the central bank raises the nominal interest rate, the price of reserves ( $Q_t^C$ ) falls, leading to a capital loss.

The right-hand side of the budget constraint represents expenditures for central bank. Expenditures consist of redemption of reserves ( $D_{t-1}$ ), purchase of assets ( $Q_t^T B_t^C$ ), and remittance to Treasury ( $P_t H_t$ ). A positive  $H_t$  means that Treasury receives and central bank sends. If the nominal interest rate increases (the price of reserves drops),  $Q_t^C D_t$  drops and requires remittance from Treasury (decline of  $P_t H_t$ ).

Note that this budget constraint is based on mark-to-market valuation, meaning that the price of long-duration bonds reflects their market price rather than their book value. The model assumes that the central bank trades assets every period, which contrasts with holding assets until maturity, where market prices do not affect the central bank's budget. In practice, while the Bank of England adopts mark-to-market valuation for central bank assets, the Federal Reserve and other central banks, including the Bank of Japan, use book-value accounting to calculate asset values. This paper follows a mark-to-market valuation.

For the central bank's asset purchase policy,  $B_t^C$ , it is assumed that a constant fraction of bonds

is held by the central bank.

$$B_t^C = \alpha B_t^T, \quad (19)$$

where  $\alpha$  is a parameter, and  $B^T$  is the total supply of bonds. This assumption helps reduce the size of the state space. As I will describe in the next section, the model has four state variables: exogenous shocks, reserves, total supply of bonds, and bonds held by the central bank. This complexity introduces computational difficulties. By assuming (19), the model is reduced to three state variables, allowing for a global solution.

The justification for this assumption is that the focus of this paper is on the central bank's liability side, not its asset side. While the central bank manages both liabilities and assets, this paper emphasizes the liability side and endogenizes the liability policy. In contrast, one of the main objectives of asset purchase policies is to stabilize financial markets (Gertler and Karadi, 2011), which is beyond the scope of this model. Therefore, I treat the asset policy as exogenous.

Under this assumption, the central bank's asset purchases remain smooth over time. A sudden change in the amount of asset purchases could destabilize the asset market.<sup>4</sup> This assumption aligns with the central bank's objective of minimizing disruptions in the financial market.

Finally, the most important feature of this model is the constraint on optimal transfers from the Treasury to the central bank. This constraint is one-sided: While the Treasury can receive as many resources as needed from the central bank, Treasury is limited in its ability to transfer to central bank. The inequality constraint on the remittance is

$$H_t \geq H^*, \quad (20)$$

where  $H^*$  is an exogenous parameter. The model aligns with the Federal Reserve's actual policy. Transfers from the central bank to the Treasury have a lower bound of zero. When the central bank's costs exceed its earnings, a so-called "deferred asset" is accumulated. A deferred asset is a negative liability that represents the cumulative value of the shortfall in earnings. Once the Fed returns to positive net income, it will use those earnings to pay down the deferred asset. During

---

<sup>4</sup>See the literature on the Taper Tantrum (Eichengreen and Gupta, 2015) for a discussion of the costs associated with sudden changes in the central bank's asset purchase policy.

this period, the Fed does not transfer funds to the Treasury, even if it earns profits; those profits are used to reduce the deferred asset. Once the deferred asset reaches zero, the Fed will resume sending remittances to the Treasury. As of October 2024, the deferred asset stands at \$210 billion, approximately 0.7% of annual GDP.

The motivation for this constraint stems from “political reasons” from the Treasury’s perspective. To cover the central bank’s losses, the Treasury would need to raise taxes or issue additional debt, both of which are politically costly. Moreover, the central bank pays interest expenses to commercial banks, which are not perfectly competitive. If the Treasury decides to cover these interest expenses through taxation, it effectively redistributes income from households, including poorer ones, to commercial banks. This type of redistribution is difficult for the Treasury to justify politically.

From the central bank’s perspective, requesting capital injections could help maintain a strong financial position and avoid a weakened balance sheet. However, there is concern that relying on parliamentary decisions for funding could threaten central bank independence.<sup>5</sup> A motivation for this constraint is to maintain central bank independence in the sense that parliamentary decisions do not impact the conduct of monetary policy.

The literature on the unconsolidated government budget already models remittance ([Bassetto and Messer, 2013](#); [Del Negro and Sims, 2015](#); [Benigno and Nisticò, 2020](#); [Benigno, 2020](#)). However, no model has ever studied the constraint on remittance.

Before 2022, when the Federal Reserve began incurring losses, it transferred funds to the Treasury due to profits from its asset holdings. Since the central bank’s assets are primarily long-duration bonds with term premia, the income from holding these bonds exceeded expenses on interest paid on short-duration reserves. These profits are substantial; in practice, the transfers from Federal Reserve finances 2% of federal expenditure on average between 2009 and 2021. Details on data related to remittances are provided in [Appendix A](#). I discuss the fiscal implications of central bank support to the Treasury in this model.

---

<sup>5</sup>For actual comments from central bankers, see [Floden \(2022\)](#), where the Deputy Governor of the Riksbank expresses these concerns

## 2.4 Market Clearing

Clearing of the goods  $i$  market requires the following.

$$y_t(i) = C_t(i) + G_t(i) + \frac{\varphi}{2} \left( \frac{p_t(i)}{p_{t-1}(i)} - 1 \right)^2 y_t(i) \quad (21)$$

$$Y_t(i) = A_t N_t(i). \quad (22)$$

In a symmetric equilibrium,

$$Y_t = C_t + G_t + \frac{\varphi}{2} (\pi_t - 1)^2 Y_t \quad (23)$$

$$Y_t = A_t N_t. \quad (24)$$

The clearing conditions for bonds are

$$B_t^H + B_t^C = B_t^T, \quad (25)$$

where bonds are held by households and the central bank. Note that I impose an assumption that central bank holds  $\alpha$  fraction of total supply of bonds.

$$B_t^H = (1 - \alpha) B_t^T \quad (26)$$

$$B_t^C = \alpha B_t^T \quad (27)$$

There is also market clearing in reserves markets where reserves held by households evolves according to the central bank's budget constraint.

The price index is defined as

$$P_t \equiv \left[ \int_0^1 p_t(i)^{1-\theta} di \right]^{\frac{1}{1-\theta}} \quad (28)$$

$$\pi_t \equiv \frac{P_t}{P_{t-1}}. \quad (29)$$

## 2.5 Equilibrium

Given the distribution of initial prices,  $p_{-1}(i)$ , stochastic processes, and the initial level of liabilities  $B_{-1}, D_{-1}$ , a competitive equilibrium of this economy consists of allocations  $\{C_t, N_t, Y_{i,t}\}_{t=0}^{\infty}$ , prices  $\{p_t(i)\}_{t=0}^{\infty}$ , and policy instruments  $\{Q^C, Q^T, \tau, B_t, D_t\}_{t=0}^{\infty}$ , such that

- Allocations solve the problem of the household given prices and policies.
- $p_t(i)$  solves the problem of firm  $i$ .
- $p_t(i) = p_t(j)$ .
- The Treasury, central bank's budgets, and a constraint on remittance are satisfied.
- Goods markets, reserve market, and bond market clear.

Implementable equilibrium conditions are summarized in section 3.

## 3 The Optimal Policy Problem under discretion

This section outlines the optimal policy problem under discretion. The government makes decisions sequentially. Each period  $t$ , the government maximizes the utility of households by choosing  $\{C_t, N_t, \Pi_t, Q_t^C, Q_t^T, b_t, d_t, \tau_t, H_t\}$  and the Lagrangian multipliers associated with the equilibrium conditions, taking as given the next period value and next policy functions. I define real value of reserves and bonds,  $b_t \equiv \frac{B_t}{P_t}$  and  $d_t \equiv \frac{D_t}{P_t}$ .

$$V_t(s_t) = \max_{a_t} \frac{1}{1-\sigma} C_t^{1-\sigma} - \frac{1}{1+\nu} N_t^{1+\nu} + \frac{\chi_1}{1-\gamma_1} (Q_t^C d_t)^{1-\gamma_1} + \frac{\chi_2}{1-\gamma_2} ((1-\alpha) Q_t^T b_t)^{1-\gamma_2} + \beta E_t V_{t+1}(s_{t+1}), \quad (30)$$

where  $s_t \equiv \{\mu_t^w, A_t, G_t, b_{t-1}, d_{t-1}\}$  and  $a_t \equiv \{C_t, N_t, \Pi_t, Q_t^C, Q_t^T, b_t, d_t, \tau_t, H_t\}$ .

Equilibrium conditions are

$$\text{(Euler for reserves)} \quad C_t^{-\sigma} Q_t^C = \beta E_t \left[ \frac{C_{t+1}^{-\sigma}}{\pi_{t+1}} \right] + \chi_1 (Q_t^C d_t)^{-\gamma_1} Q_t^C \quad (31)$$



$$\text{(Euler for Treasury bond)} \quad C_t^{-\sigma} Q_t^T = \beta E_t \left[ C_{t+1}^{-\sigma} \frac{1 + \rho^T Q_{t+1}^T}{\pi_{t+1}} \right] + \chi_2 ((1 - \alpha) Q_t^T b_t)^{-\gamma_2} Q_t^T \quad (32)$$

$$\begin{aligned} \text{(Firm FOC)} \quad N_t C_t^{-\sigma} (\varphi(\pi_t - 1) \pi_t A_t - (1 - \theta)(1 - \tau_i) A_t - \theta \mu_t^w N_t^\nu C_t^\sigma) \\ = \beta E_t [A_{t+1} N_{t+1} C_{t+1}^{-\sigma} \varphi(\pi_{t+1} - 1) \pi_{t+1}] . \end{aligned} \quad (33)$$

$$\text{(Market Clearing)} \quad A_t N_t = C_t + \frac{\varphi}{2} (\pi_t - 1)^2 A_t N_t + G_t \quad (34)$$

$$\text{(Treasury Budget)} \quad Q_t^T b_t + \tau_t Y_t + H_t = G_t + (1 + \rho^T Q_t^T) \frac{b_{t-1}}{\pi_t}. \quad (35)$$

$$\text{(central bank's Budget)} \quad Q_t^C d_t + (1 + \rho^T Q_t^T) \alpha \frac{b_{t-1}}{\pi_t} = \frac{d_{t-1}}{\pi_t} + Q_t^T \alpha b_t + H_t \quad (36)$$

$$\text{(Remittance)} \quad H_t \geq H^* \quad (37)$$

$$\text{(Shocks)} \quad \mu_t^w = \bar{\mu}^w + \rho^w (\mu_{t-1}^w - \bar{\mu}^w) + \varepsilon_t^w. \quad (38)$$

$$A_t = \bar{A} + \rho^a (A_{t-1} - \bar{A}) + \varepsilon_t^a. \quad (39)$$

$$G_t = \bar{G} + \rho^g (G_{t-1} - \bar{G}) + \varepsilon_t^g. \quad (40)$$

The discretionary equilibrium is determined by the first-order conditions, expectations that are consistent with policy functions, and the exogenous process for shocks. The solution is the time-invariant Markov-perfect equilibrium policy rules that map states  $\{\mu_t^w, A_t, G_t, b_{t-1}, d_{t-1}\}$  to optimal decisions for  $\{C_t, N_t, \Pi_t, Q_t^T, Q_t^C, b_t, d_t, \tau_t, H_t\}$ .

The government is constrained to behave in a time-consistent manner. The economic agents anticipate that the government faces this constraint and form expectations. However, the government can change the expectations by choosing state variables, bonds and reserves. In rational expectation equilibrium, the expectations are formed based on the mapping that map endogenous variables to the state-space.

I impose that the central bank holds an  $\alpha$  fraction of the total supply of bonds. The government only chooses the total supply of bonds; it does not need to separately decide on the total supply of bonds and the portion held by the central bank. The allocation of bonds between households and the central bank is determined by equations (26) and (27). The state variables are shocks, reserves, and the total supply of bonds.

**Define the consolidated model and the unconsolidated model** I define two models; the consolidated model and the unconsolidated model. The unconsolidated model is defined as the model where the government maximizes the utility of households subject to (31) - (40). The remittance from the Treasury to the central bank is constrained, so central bank's and Treasury's budgets are not fully consolidated.

“The consolidated model” is defined as the model where  $H^*$  is low enough that the equation (37) never binds. Later,  $H^*$  is set to be  $-\infty$  in quantitative exercises. The consolidated government budget is given by substituting  $H_t$  in equation (35) into equation (36).

$$Q_t^C d_t + (1 - \alpha)Q_t^T b_t + \tau_t Y_t = \frac{d_{t-1}}{\pi_t} + (1 + \rho^T Q_t^T)(1 - \alpha)\frac{b_{t-1}}{\pi_t} + G_t. \quad (41)$$

In the consolidated model, the government maximizes household utility subject to equations (31)-(34), (38)-(40), and (41). The government faces only the consolidated government budget constraint, instead of separate Treasury's and central bank's budget, and the constraint on transfers. Optimal transfers between the central bank and the Treasury are always achievable. It is important to note that the consolidated model represents the optimal monetary-fiscal policy problem within a standard New Keynesian framework (Benigno and Woodford, 2003; Schmitt-Grohé and Uribe, 2004). The key differences from the literature and the consolidated model in this paper are as follows: (1) while my model considers optimal policy under discretion, those papers analyze policy under commitment; (2) my model includes reserves as interest-bearing liabilities, whereas those papers include money.

## 4 Solution method and calibration

### 4.1 Solution method

Two reasons necessitate the use of global solution methods. The first is the presence of an occasionally binding constraint on remittance. Stochastic shocks cause the remittance to occasionally bind the lower bound. The policy problem is highly nonlinear, and a perturbation technique is not suitable. Second, under discretionary policies, the model's steady-state which local dynamics should be approximated around depends on the derivative of expectations with respect to reserves

and government liabilities. This is because the state variables in the model include reserves and government liabilities, and the expectations in Euler equations and a New Keynesian Phillips Curve are evaluated at each reserves and bonds. This derivative of expectations with respect to reserves and bond is endogenously determined as a part of model solution, making the steady-state a priori unknown. This is a common approach in the literature (Niemann and Pichler, 2011; Niemann, Pichler, and Sorger, 2013; Leeper, Leith, and Liu, 2021).

The model is solved using the time-iteration method of Coleman (1991). I begin by guessing initial policy functions and then compute the associated expectations. Assuming that the guessed policy functions apply to the next period, I solve the first-order necessary conditions of the government’s problem on a discrete set of grids to find the policy functions for the current period. This process is repeated until the policy functions converge, such that the difference between today’s and tomorrow’s policy functions becomes arbitrarily small. Details are described in Appendix C.

## 4.2 Calibration

I calibrate my model to the US economy. The time unit is a quarter. The calibration table is summarized in table 1. Parameters that are commonly used in the New Keynesian literature are taken from the literature. I set  $\beta = 0.995$ , which implies a 2% annual real interest rate. The intertemporal elasticity of substitution is set to  $\frac{1}{2}$ , a value commonly found in the literature. The Frisch elasticity of labor supply is fixed at  $\frac{1}{7}$ , while the elasticity of substitution between intermediate goods is 10, implying a monopolistic markup of 10%. The price adjustment cost parameter is set at 100. The coupon decay parameter,  $\rho^T = 0.95$ , corresponds to an average debt maturity of around 5 years, consistent with U.S. data (See Table 2 in Leeper and Zhou (2021)).

Other parameters are calibrated in my model. I describe my calibration strategy. The parameters,  $\chi_1, \chi_2$ , that decide the convenience of reserves and bonds, are chosen to match the steady-state value of reserves and bonds. Steady-state reserves are matched to 15% of GDP. The recent level of government liabilities in the data is 120% of GDP, and the convenience yield is not enough to match the high level of government liabilities. I match the steady-state bonds as the 30% of GDP that is the average of 1970-2020 in US data.

The fraction of bonds held by the central bank,  $\alpha$ , is calibrated at 0.4 to match the central bank’s asset-to-liability ratio. A higher  $\alpha$  leads to a higher asset-to-liability ratio. In the data, the

Federal Reserve's asset-to-liability ratio is approximately 1. Setting  $\alpha$  at 0.4 in the model achieves an asset-to-liability ratio of one. In practice, the observed  $\alpha$  from the data is lower than the model's value (peaking at 21% in 2022).<sup>6</sup> This discrepancy between model and data arises because, in reality, the Federal Reserve holds assets beyond bonds, such as Mortgage-Backed Securities and government-sponsored enterprise fixed assets, which are not included in this model. If I set  $\alpha = 0.21$  to match the data and align the model's reserve size with observed values, the central bank's assets would fall significantly below its liabilities. This mismatch would alter the quantitative results, particularly since the model needs to capture both capital loss on the asset side and the interest expense on reserves. To avoid this issue, I set  $\alpha = 0.4$ , ensuring that the asset-to-liability ratio remains approximately 1, consistent with the data.

The parameters describing the curvature of the utility of reserves and bonds,  $\gamma_1, \gamma_2$ , are calibrated so that the elasticity of price to quantity in the data matches that in the model following [Krishnamurthy and Vissing-Jorgensen \(2012\)](#). The details are discussed in the Appendix B.

Lastly, the lower bound on remittance,  $H^*$ , is -0.0025, that is 0.06% of annual GDP. In practice,  $H^*$  is zero implying that central bank does not receive any amounts of funds from Treasury. I tried to set  $H^* = 0$ , but under this parameter, the model does not converge. The possible reason is that in a state-space with large reserves and an exogenous shock leading to higher nominal interest rate, the reserves keep increasing because central bank cannot receive any funds from Treasury, but central bank needs to pay high interest rate on reserves. Then, reserves keep increasing, and there is no equilibrium. As a result, I set  $H^*$  slightly negative so that the model converges. I set  $H^* = -0.0025$  that is the highest and closes value to zero such that the model converges.

## 5 Responding to shocks

This section describes the main exercises: how policies respond to shocks, a positive cost-push shock, a negative productivity shock, and a positive public expenditure shock under the consolidated model and unconsolidated model. The goal is to show a difference between the consolidated and the unconsolidated model.

For all types of shocks, the procedure is as follows: at time  $t = 1$ , an exogenous shock occurs.

---

<sup>6</sup>I show the ratio of U.S. Treasury Securities held by the Federal Reserves to Federal Debt. The data is from FRED.

**Table 1:** Calibration

Variable	Value	Description	Target	Model	Data
$\beta$	0.995	Discount factor	-	-	-
$\sigma$	2	Risk aversion	-	-	-
$\nu$	7	Frisch Elasticity	Frisch Elasticity	1/7	-
$\theta$	10	Elasticity of substitution among goods	Markup	7%	-
$\phi$	100	Price adjustment cost	Slope of NKPC	0.05	-
$\rho^T$	0.95	Duration of Treasury	Average Maturity	5 years	5 years
$\chi_1$	0.0012	Utility from reserve	Steady-state re-serves	15% of GDP	15% of GDP
$\chi_2$	0.002	Utility from Treasury bond	Steady-state bonds	30% of GDP	120% of GDP
$\gamma_1$	1.7	Curvature of utility from reserve	Elasticity of price to reserve supply	-0.2	0.2
$\gamma_2$	1.5	Curvature of utility from bonds	Elasticity of price to bonds supply	-0.1	-0.1
$\alpha$	0.4	CB's asset holding	Asset/liability	1	1
$H^*$	-0.0025	Lower bound on remittance	-	-	-

The state variables include reserves and bonds, which I give as an initial condition. The exogenous shock then follows its own AR(1) process as described by equations (38)-(40). The innovations in the AR(1) process are randomly drawn from a normal distribution. I generate 5000 paths of the exogenous shock, each with a different sequence of innovations randomly drawn from normal distribution. I then calculate the dynamics of variables given each sequence of exogenous shocks and the policy functions. Finally, I take the average of the 5000 simulated dynamics and plot the result.

## 5.1 Cost-push shock

The first exercise is to show the transition dynamics after the cost-push shock. The purpose of this exercise is to simulate the difference between the consolidated and unconsolidated models, that is, the effect of the lack of fiscal backing. This cost-push shock exercise is motivated by (i) a large inflation shock in 2022, and (ii) large reserves held by the central bank when the shock hits. According to each motivation, I simulate the dynamics after a positive cost-push shock and

the economy starts from large reserves when the shock hits. The economy does not start from the steady state.

Figure 1 plots the results after increasing the wage mark-up  $\mu^w$  by 8%. The wage mark-up increases from 1, which is the steady state, to 1.08. The horizontal axis is in quarters. The blue line represents the result in the consolidated model. The red line represents the result in the unconsolidated model. The initial conditions for the state variables are reserves and bonds. The initial level of reserves is high, at the 90th percentile of the simulated economy. The level of bonds is at the steady-state level. Note that the economy does not start from the steady state, so the variable moves even without the cost-push shock. I have not netted out the dynamics when the same size shock hits, but the economy starts from the steady state.

First, I describe the policies chosen by the government in the consolidated model. Under the optimal policy, the government decreases the sales tax rate to offset the increase in the marginal cost of labor. By reducing the sales tax rate, the government can increase the marginal product of labor, helping it to track the marginal cost even after a shock. According to the first-order conditions for firms, shown in equation (13), changes in the wage mark-up can be offset by adjusting the tax rate. This reduction in the tax rate is illustrated in Figure 1-(g).

As a result of low tax rate, the tax revenue drops, but the Treasury needs to finance the public expenditure. The Treasury issues bonds to finance public expenditure. The Treasury supplies more bonds, and bonds increases in figure 1-(f). From the central banks' perspective, the central bank helps Treasury's budget by issuing reserves, creating more resources, and sending resources to the Treasury. The central bank supplies more reserves after  $t = 2$ . However, upon the shock, the central bank holds large reserves. The central bank receives resources to reduce the level of reserves at  $t = 1$ . Therefore, reserves decline, and then, increase. This is seen in figure 1-(e).

For remittance, at  $t = 1$ , it takes a negative value, that is, Treasury sends and central bank receives. This is to reduce large reserves. After  $t = 1$ , the remittance is close to zero and flat. This is because two effects offset each other. The first is that central bank issues more reserves and send resources to Treasury. The second is that central bank needs to purchase more bonds as Treasury issues more bonds. For central bank to purchase assets, the central bank needs to receive resources from the Treasury. These two effects offset each other. As a result, the remittance is flat in 1-(h) after  $t = 1$ .

For consumption and inflation, the government cannot fully offset the cost-push shock, so the consumption drops and inflation rate increases. The price of reserves and bonds drops, that is the increase of nominal inflation rate. In summary, the role of central bank is to help Treasury to do tax break upon the shock. central bank can create resources by issuing reserves, so central bank helps Treasury by sending resources to Treasury.

Next, I describe the dynamics in the unconsolidated model. The key results are that the inflation rate is higher and output falls more. This is because the government cannot lower the tax rate sufficiently, so the high marginal cost reduces the output and feeds through to the inflation rate. Figure 1-(g) shows that the tax rate does not fall as much in the unconsolidated model as in the consolidated model. Why can the government not reduce the tax rate enough? From the central bank's point of view, the issuance of new reserves is lower. Figure 1 shows that reserves in the consolidated model increase after  $t = 2$  to send resources to the Treasury. Reserves in the unconsolidated model do not increase much. This is because the large reserves cannot be reduced by remittance from the Treasury. If the central bank issues more reserves, the large reserves should be reduced later by remittance. This is limited in the unconsolidated model. The issue of reserves in the unconsolidated model is smaller. Less reserve issuance means that the allocation of resources from the central bank to the Treasury is smaller in the unconsolidated model. As a result, the government cannot use tax rate to offset the cost-push shock. The central bank tolerates a higher rate of inflation. The inflation rate responds more in the unconsolidated model by 1.3%. Consumption falls by more than 0.07%. Since consumption falls by 0.8% and inflation rises by 0.4% in the consolidated model, the difference between the consolidated and unconsolidated models is significant.

In summary, the central bank does not help Treasury's budget enough in the unconsolidated model because the central bank does not create resources by issuing more reserves. The tax break is not sufficiently large in the unconsolidated model. The lack of *fiscal* backing impacts *fiscal* policy.

An important point to note is that the main mechanism works through fiscal policy (specifically, the sales tax rate) rather than the nominal interest rate. This is because a tax cut is more effective at offsetting the shock, while monetary policy is less effective. Full shock compensation would be possible if the Treasury had access to non-distortionary taxes. If the Treasury could finance a tax break through lump-sum taxation, it could fully offset the shock. However, because the Treasury does not have access to lump-sum taxes, it cannot fully offset the shock. The key observation is that

a tax break is supported by the central bank through remittances in the consolidated model, but this support is limited in the unconsolidated model.

## 5.2 Productivity shock

The second exercise compares the transition dynamics of the two models following a negative productivity shock. The dynamics of this type of shock are of interest in their own right (Blanchard and Galí, 2007). Additionally, this exercise is motivated by the fact that, after such a shock, the central bank typically raises the nominal interest rate, leading to higher interest expenses. Similar to the case of a cost-push shock, this represents another scenario where the central bank must increase the nominal interest rate. However, this section highlights that the mechanism through which the lack of fiscal backing affects policy responses differs from the case of a cost-push shock.

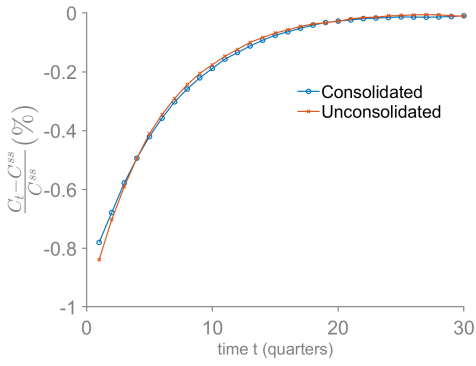
Figure 2 shows the outcomes following a decline in productivity,  $A_t$ , by 5%. The blue line represents the outcomes in the consolidated model, while the red line represents the outcomes in the unconsolidated model. To simulate the dynamics, initial conditions for reserves and bonds are provided. Reserves are set at a higher value, corresponding to the 90th percentile of the simulated economy, consistent with the previous exercise.

The intuition for the consolidated model is as follows: After a negative productivity shock, the government aims to adjust the policy rate to track the natural interest rate. Following the shock, it is optimal to reduce both labor supply and consumption. The marginal cost also rises, causing an increase in the inflation rate. To contract demand and lower inflation, the government raises the nominal interest rate. As aggregate output declines, tax revenue decreases. The government raises the tax rate and issues bonds to smooth tax distortions over time.

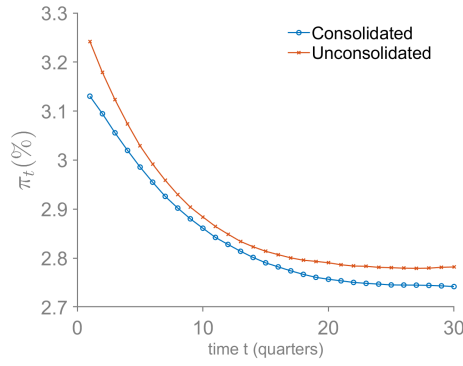
For the central bank, with large initial reserves, it receives resources and continues to reduce reserves. Although the inflation rate rises only slightly (by 0.15%), this response is non-zero, which contrasts with the “divine coincidence,” which suggests that under optimal policy, the inflation response should be zero. This discrepancy occurs because the government uses inflation to reduce real liabilities and relax the budget constraints of both the Treasury and the central bank. Importantly, the primary policy tool in response to a negative productivity shock is raising the nominal interest rate, which increases by 2.5 percentage points.

Next, I explain the intuition behind the unconsolidated model. A key result is that the central

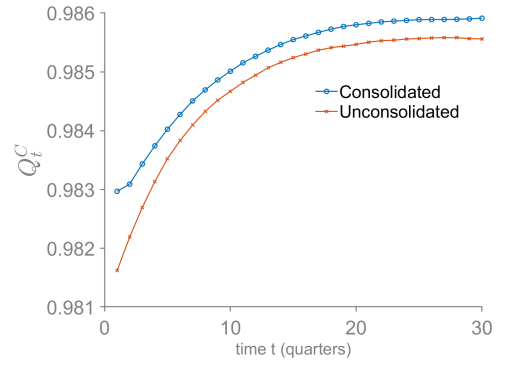




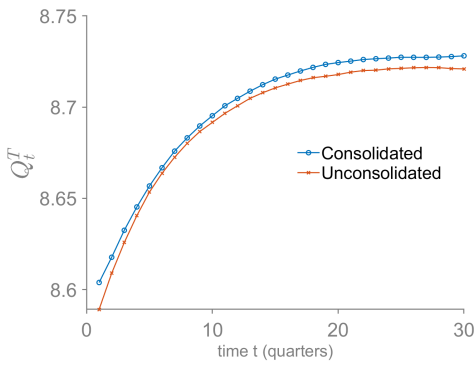
(a) Consumption



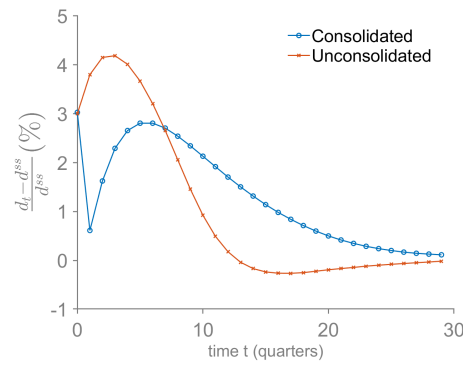
(b) Inflation



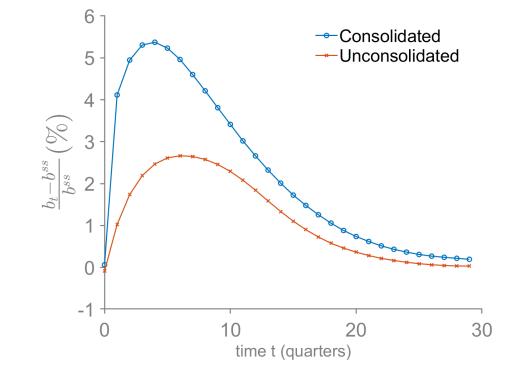
(c) Price of reserves



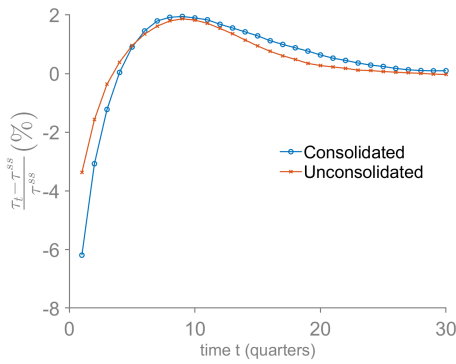
(d) Price of bonds



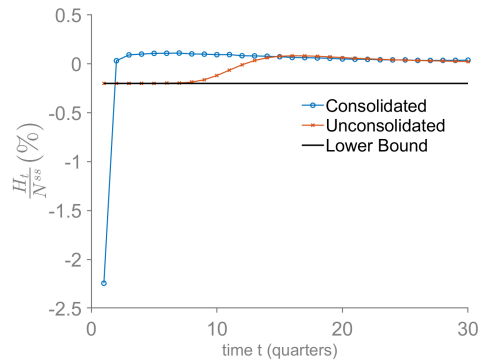
(e) Reserves



(f) Bonds



(g) Sales tax



(h) Remittance

**Figure 1: Cost-push shock**

*Note:* This figure shows the dynamics of key variables upon the positive wage markup shock by 8%. The wage mark-up increases from 1 to 1.08. The horizontal axis is quarters. The vertical axis for consumption, prices of reserves, prices of bonds, reserves, bonds are the steady-state deviation represented by percent. The vertical axis for inflation rate is annualized inflation rate in percent,  $\left(\left(\frac{P_t}{P_{t+1}}\right)^4 - 1\right) * 100$ . The vertical for remittance is ratio of remittance to GDP in percent  $\frac{H_t}{Y_t} * 100$ . The blue line represents the outcomes in the consolidated model. The red line represents the outcomes in the unconsolidated model.

bank cannot raise the nominal interest rate sufficiently. The price of reserves does not decrease as much in the unconsolidated model compared to the consolidated model. This is because paying high interest on reserves leads to larger reserve balances, which cannot be reduced through remittances. When the shock hits, the central bank already holds large reserves, and by paying interest on these reserves, it issues more reserves. However, this does not satisfy the central bank's budget constraint due to the limited remittance. As a result, the government cannot raise the nominal interest rate enough.

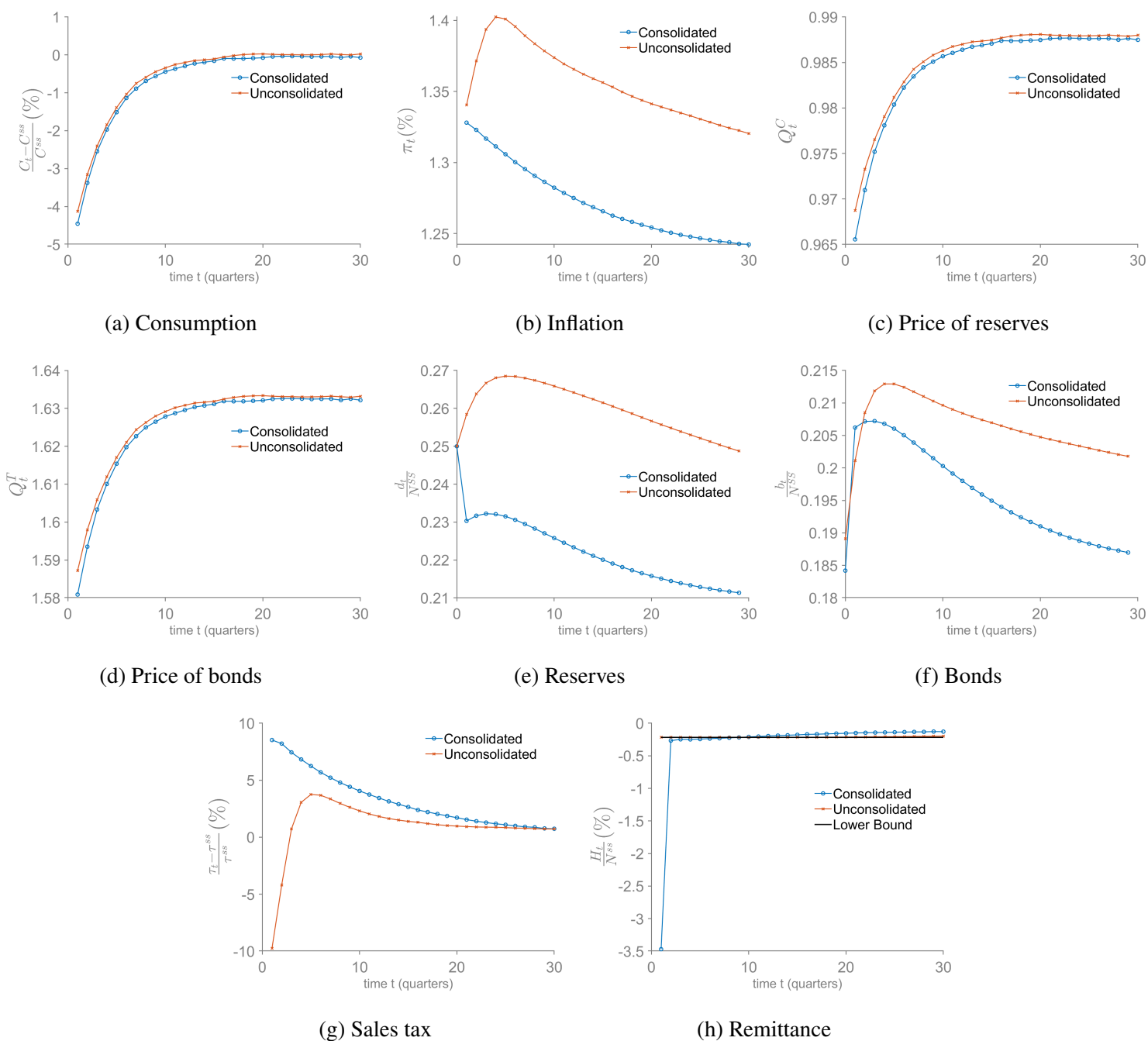
Due to the lower nominal interest rate, consumption does not contract sufficiently in the unconsolidated model. Compared to the consolidated model, consumption responds 7% less in the unconsolidated model. Labor supply increases more in the unconsolidated model because households consume more. Additionally, the inflation rate is higher in the unconsolidated model because the interest rate cannot be raised enough to offset the inflationary shock.

On the fiscal side, the sales tax is lower in the unconsolidated model because firms need to produce more, and a lower sales tax leads to a higher marginal product. The Treasury also issues more bonds because tax revenue is lower, but it still needs to finance public expenditure.

A natural question arises: why does the central bank issue large reserves by paying interest on reserves? The first reason is that large reserves do not satisfy the budget constraint when remittance is limited. Liabilities (reserves) must equal the present discounted value of assets and remittance. Since transfers from the Treasury are constrained, the issuance of reserves is also restricted. More interestingly, the second reason is that large reserves are needed to meet households' demand for reserves. To incentivize households to hold large reserves, the price of reserves must be low. However, this decline in the price of reserves affects real allocations through the households' Euler equation. This effect is costly, so the government does not want to issue excess reserves.

### **5.3 Public expenditure shock**

This section describes the transition dynamics following a public expenditure shock. Motivated by the significant increase in public spending observed during the COVID-19 pandemic, I examine the role of the central bank in responding to a positive public expenditure shock. My results highlight how the central bank creates resources and supports the Treasury's budget through remittances. To demonstrate the central bank's capacity to generate resources, the initial condition assumes a large



**Figure 2: Productivity shock**

*Note:* This figure shows the dynamics of key variables upon the negative productivity shock by 5%. A productivity drops from 1 to 0.95. The horizontal axis is quarters. The vertical axis for consumption, prices of reserves, prices of bonds, reserves, bonds are the steady-state deviation represented by percent. The vertical axis for inflation rate is annualized inflation rate in percent,  $\left(\left(\frac{P_t}{P_{t+1}}\right)^4 - 1\right) * 100$ . The vertical for remittance is ratio of remittance to GDP in percent  $\frac{H_t}{Y_t} * 100$ . The blue line represents the outcomes in the consolidated model. The red line represents the outcomes in the unconsolidated model.

stock of bonds, consistent with U.S. data, where the government liability-to-GDP ratio is 120%. The level of reserves is set at the steady-state, which differs from the exercises involving productivity and cost-push shocks.

Upon the shock, the Treasury holds a large amount of bonds, limiting its capacity to issue additional bonds in response to the positive public expenditure shock. In contrast, the central bank holds reserves at their steady-state level, allowing it to create more resources by issuing additional reserves. While the marginal value of bonds is low, the marginal value of reserves remains relatively high. This leads to a stark contrast between the consolidated and unconsolidated models.

Figure 3 shows the outcomes following an increase in  $G_t$  by 2% of GDP. Public expenditure rises from 15% to 17% of GDP at time  $t = 1$ . The dynamics in the consolidated model are represented by the blue line, while the red line depicts the unconsolidated model. I will first explain the intuition behind the consolidated model.

The government experiences a positive public expenditure shock and responds by raising the tax rate, although this is distortionary. To smooth the tax distortion, the Treasury issues more bonds. central bank issues more reserves. The central bank also transfers resources to support the Treasury's budget. Since the Treasury holds large bonds at the time of the shock, their price declines to meet the increased demand for bonds. In contrast, reserves are relatively smaller in supply, so the price of reserves is lower than that of bonds. The central bank uses these cheaper reserves to create additional resources, which are transferred to the Treasury. Upon the shock, remittances take a positive value, meaning that the Treasury receives resources from the central bank. Later, remittances fall below their steady-state level as the central bank receives transfers to reduce the increased reserves.

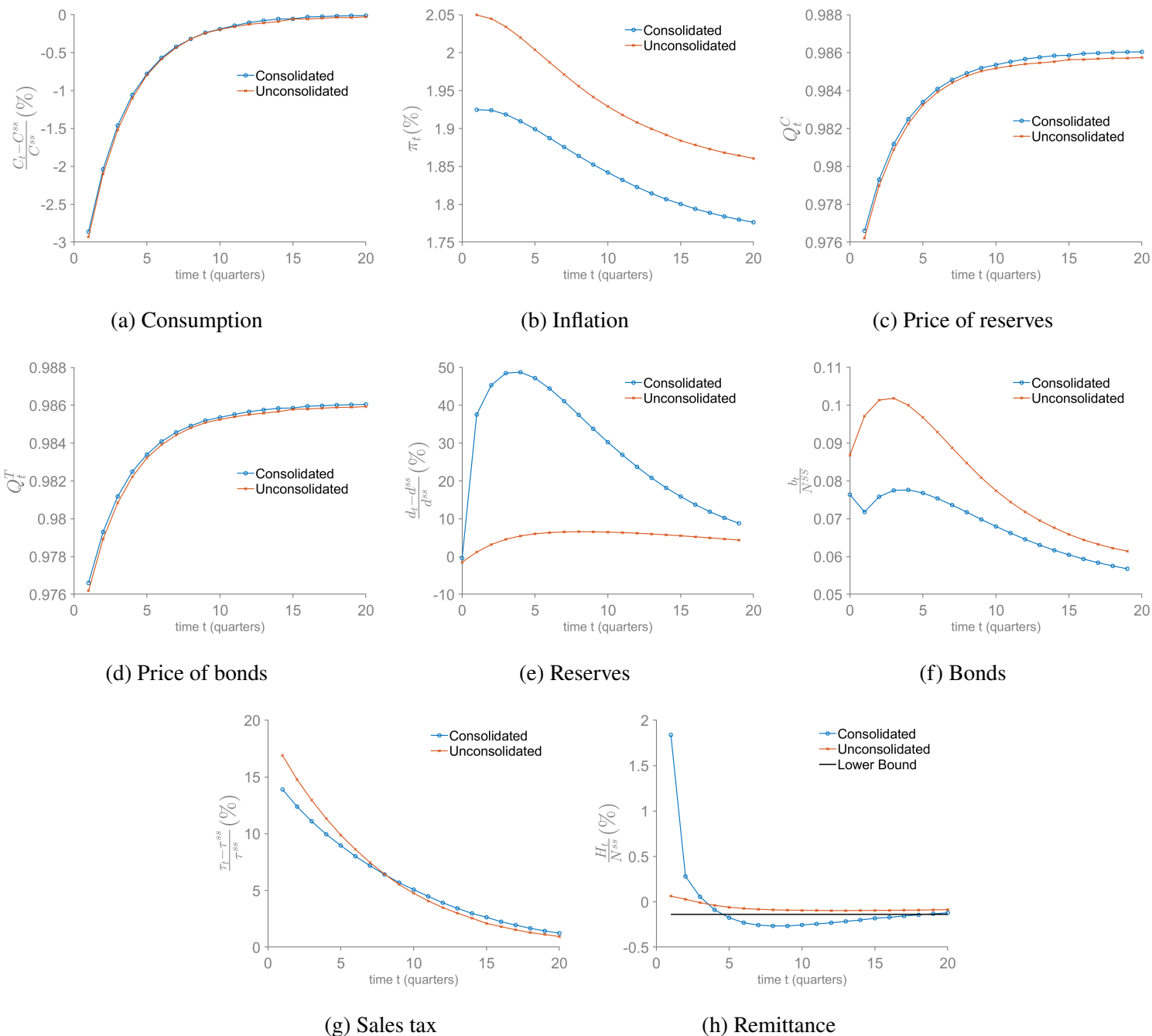
In terms of real allocations and inflation, labor supply increases to meet the demand for public expenditure, while consumption falls due to crowding out. The inflation rate rises as firms increase production, leading to higher marginal costs. Additionally, the government has an incentive to inflate nominal liabilities because the level of liabilities is higher. Regarding prices, the price of reserves is low and the nominal interest rate is high, which contracts consumption.

Next, I explain the intuition behind the unconsolidated model. In summary, the lack of fiscal backing for the central bank limits its ability to smooth taxes. In the unconsolidated model, remittances cannot fall below a certain threshold. While in the consolidated model, the central bank

reduces reserves by receiving transfers from the Treasury, this is not feasible in the unconsolidated model. The central bank understands that large reserves cannot be reduced through remittances later, so it does not issue enough reserves. While the central bank increases reserves in the consolidated model, it does not do so sufficiently in the unconsolidated model. As a result, the central bank does not provide enough support to the Treasury by sending resources. This is shown in the path of remittance. In Figure 3-(h), at time  $t = 1$ , remittances take a higher value in the consolidated model, while they take a lower value in the unconsolidated model. This indicates that the central bank provides less support to the Treasury's budget in the unconsolidated model. Consequently, the Treasury receives less help from the central bank and must issue more bonds to finance the increased public expenditure. As a result, bonds take on a higher value in the unconsolidated model. However, since the Treasury already holds a large quantity of bonds and their price is high, it becomes difficult for the Treasury to issue enough bonds. This limits the government's ability to smooth taxes. Because the increase in public expenditure is not smoothed through the issuance of liabilities, the higher public expenditure is financed through taxes, resulting in a greater tax rate response in the unconsolidated model compared to the consolidated model.

In terms of real allocations, a higher tax rate on sales leads to lower production, i.e., lower labor supply. The difference in consumption between the two models is not significant. However, the inflation rate remains persistently higher in the unconsolidated model as a way to reduce reserves by inflating nominal liabilities, that is, inflating reserves.

Note that these results critically depend on the assumption that the Treasury holds a large amount of bonds at the time of the shock. Large bonds limit the Treasury's ability to smooth taxes, making fiscal backing from the central bank more crucial when responding to a public expenditure shock. Why is this important? The difference between the unconsolidated model and consolidated model is essentially central bank's ability to fiscally support Treasury. The lack of fiscal backing for the central bank restricts the central bank's ability to provide this support. Since fiscal backing from the central bank becomes even more important when the Treasury holds a significant amount of bonds, the difference between the unconsolidated and consolidated models becomes stark. To show the importance of initial condition, Appendix D.1.2 shows the dynamics when the economy starts from steady-state reserves and bonds. It shows that the difference between the two models is smaller than that when initial bonds are small.



**Figure 3: Public expenditure shock**

*Note:* This figure shows the dynamics of key variables upon the positive public expenditure shock by 2% of GDP. The public expenditure increases from 15% of GDP to 17% of GDP. The horizontal axis is quarters. The vertical axis for consumption, prices of reserves, prices of bonds, reserves, bonds are the steady-state deviation represented by percent. The vertical axis for inflation rate is annualized inflation rate in percent,  $\left(\left(\frac{P_t}{P_{t+1}}\right)^4 - 1\right) * 100$ . The vertical for remittance is ratio of remittance to GDP in percent  $\frac{H_t}{Y_t} * 100$ . The blue line represents the outcomes in the consolidated model. The red line represents the outcomes in the unconsolidated model.

## 5.4 Size of shock

This section aims to understand the relationship between the shock size and the implications of fiscal backing. Since the lower bound on remittances is a fixed parameter, it is reasonable to expect that inflation differences between the two models depend on the shock size. For instance, when the shock is small, the inflation difference between the two models is minimal, meaning that the lack of fiscal backing makes smaller difference. However, with a larger shock, the lack of fiscal backing makes a difference significantly. This section verifies the hypothesis that the difference in inflation rate varies nonlinearly with the shock size.

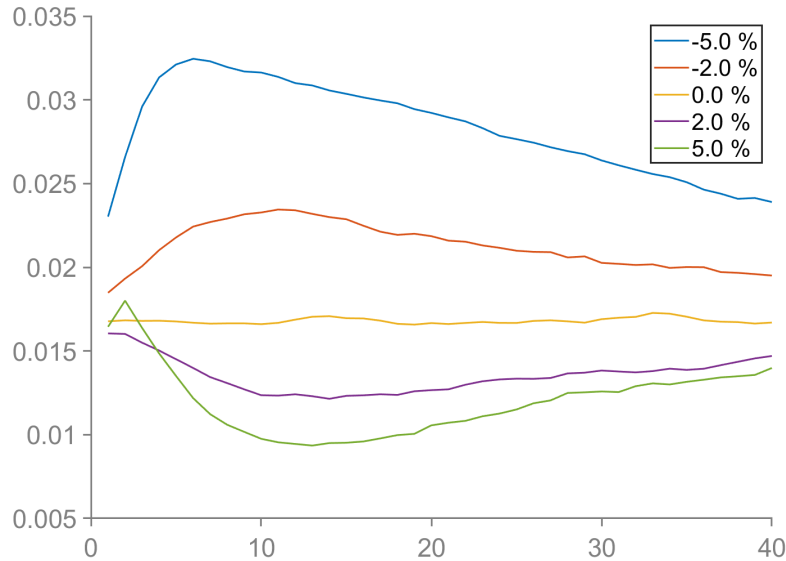
The procedure is as follows: I compute  $\pi_t^{unc} - \pi_t^{con}$ , where  $\pi_t^{unc}$  is the annualized inflation dynamics (in percentage points) after a shock for the unconsolidated model, and  $\pi_t^{con}$  is the same for the consolidated model. For example, a 4% positive productivity shock occurs at time  $t = 1$  and follows an AR(1) process. I simulate the inflation rate dynamics following this exogenous shock for both models and then calculate the difference. The same exercise is repeated for shocks of various sizes. The initial conditions for reserves and bonds are set at their steady-state values.

Figure 4 illustrates the inflation difference between the consolidated and unconsolidated models for various sizes of productivity shocks. I plot  $\pi_t^{unc} - \pi_t^{con}$ , with inflation rates simulated based on shocks of 5%, 2%, 0%, -2%, and -5%. Productivity changes from 1 to 1.05, 1.02, and so forth. The same exercise for other types of shocks is discussed in Appendix E.

If the inflation difference between the two models were independent of the shock size, figure 4 would show a flat line for all shock sizes. However, figure 4 demonstrates that, as the absolute value of the shock increases (e.g., -5%), the inflation difference between the two models also grows compared to a smaller shock (e.g., -2%). For example, when productivity drops by 5%, the inflation rate in the unconsolidated model is 0.032% higher than in the consolidated model. For a 2% productivity drop, the inflation rate difference is 0.022%. This suggests that larger shocks result in a greater divergence between the two models.

Intuitively, this result stems from the response of the nominal interest rate. With a larger productivity shock, the central bank raises the nominal interest rate more, leading to higher interest expenses. Since transfers from the Treasury are bounded by  $H^*$ , higher interest expenses result in higher reserves. In the unconsolidated model, the central bank faces a stronger incentive to reduce the nominal interest rate to manage reserve levels, which results in tolerating a higher inflation rate

as the shock size increases.



**Figure 4:** Difference in inflation between consolidated and unconsolidated model for productivity shock

Note: This figure shows the difference in inflation between the consolidated and unconsolidated models for various shock sizes. The horizontal axis represents time, and the vertical axis shows  $\pi_t^{unc} - \pi_t^{con}$ , where  $\pi_t^{unc}$  is the annualized inflation rate (in percentage points) for the unconsolidated model, and  $\pi_t^{con}$  is the same for the consolidated model. Different lines represent different shock sizes. For example, a 5% positive productivity shock occurs at time  $t = 1$  and follows an AR(1) process. I simulate the inflation rate based on this exogenous shock. The same exercise is conducted for shocks of 5%, 2%, 0%, -2%, and -5%.

## 5.5 The initial condition of reserves

The purpose of this section is to understand the relationship between the initial reserve levels and the impact of fiscal support. The initial reserve condition determines the amount of transfers required, and the impact of fiscal support may depend on the initial reserves. For example, if the initial level of reserves is large and a shock raises the nominal interest rate, the lack of fiscal backing will amplify the shock's impact on inflation. In contrast, when the initial reserve level is small, the lack of fiscal backing may not lead to significant differences.

This section examines the transition dynamics following a 5% decline in the productivity shock for various initial levels of reserves. The procedure is as follows: I compute  $\pi_t^{unc} - \pi_t^{con}$ , where  $\pi_t^{unc}$  is the annualized inflation dynamics (in percentage points) after a shock for the unconsolidated



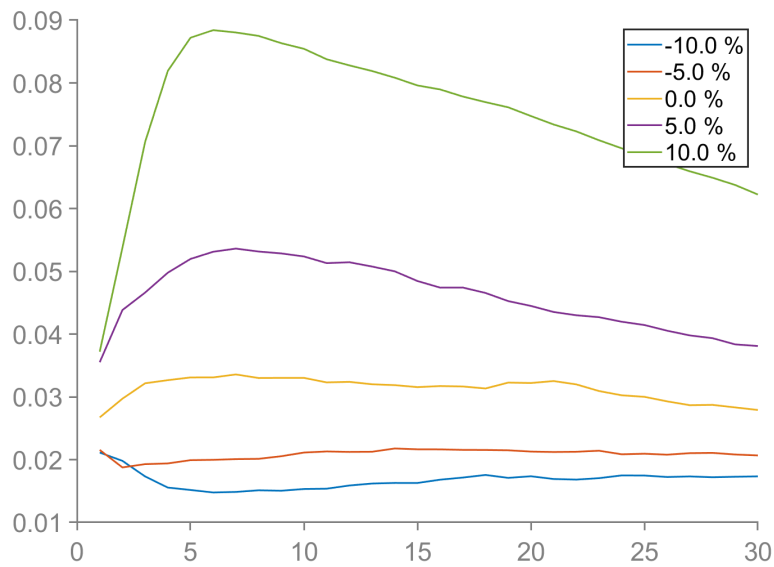
model, and  $\pi_t^{con}$  is the same for the consolidated model. At time  $t = 1$ , a 5% decrease in productivity occurs, following an AR(1) process. The initial conditions include reserves and bonds, with different levels of reserves provided: 10% above the steady state, 5% above the steady state, 5% below the steady state, and 10% below the steady state (all values are expressed as deviations from the steady state). I then simulate the inflation rate dynamics for both models,  $\pi_t^{unc}$  and  $\pi_t^{con}$ . The initial level of bonds is set at the steady-state level.

Figure 5 plots  $\pi_t^{unc} - \pi_t^{con}$  for different initial levels of reserves. It shows that the difference in inflation rates between the two models increases with the initial reserve level. When reserves are 10% above the steady-state level, inflation in the unconsolidated model is 0.09% higher than in the consolidated model. When reserves are 5% higher, inflation in the unconsolidated model is 0.05% higher. In contrast, results for steady-state reserves and reserves below the steady state show similar inflation dynamics. The impact of no fiscal backing is amplified with larger reserves,

The reasoning is as follows: higher initial reserves affect remittances in two ways. First, reserves remain above the steady-state level after the shock, leading the central bank to reduce reserves, which requires funds from the Treasury. Second, a negative productivity shock raises the nominal interest rate, and a higher nominal interest rate on larger reserves results in increased interest expenses, further requiring reserves. In the unconsolidated model, the central bank is constrained in reducing larger reserves, and households have limited capacity to absorb reserves. To manage this, the planner sets a lower interest rate to prevent an excessive increase in reserves.

## 6 Dynamic properties of the policies and allocations

This section is motivated by the question of optimal monetary and fiscal policy over the business cycle. The literature on optimal monetary and fiscal policy addresses how these policies should be set during the business cycle, with particular focus on two questions: (i) the optimal volatility of inflation: how does the government use inflation to stabilize nominal debt? and (ii) the persistence of taxes and debt: how does the government smooth tax distortions by issuing liabilities? This paper addresses these questions while sharing key elements with earlier literature, including: (a) taxes are distortionary, (b) the government issues only nominal and non-state-contingent debt, and (c) product prices are sticky. A key deviation from previous studies is the constraint on transfers



**Figure 5:** Difference in inflation between consolidated and unconsolidated model for productivity shock

Note: This figure shows the difference in inflation between the consolidated and unconsolidated models for various initial reserves. The horizontal axis represents time, and the vertical axis shows  $\pi_t^{unc} - \pi_t^{con}$ , where  $\pi_t^{unc}$  is the annualized inflation rate (in percentage points) for the unconsolidated model, and  $\pi_t^{con}$  is the same for the consolidated model. Different lines represent different initial reserves. The exercise is conducted for shocks of 10% above the steady state, 5% above the steady state, 5% below the steady state, and 10% below the steady state (all values are expressed as deviations from the steady state)

from the Treasury to the central bank.

This section presents several sample moments for key macroeconomic variables, as well as monetary and fiscal policy variables, liabilities, and remittances under both the unconsolidated and consolidated models. The goal is to compare the moments between the two models. The moments of interest include the volatility of inflation and tax rates, as well as the persistence of reserves and bonds.

The moments are computed as follows: I first generate simulated time series of length  $T$  for the variables and calculate the corresponding moments. This procedure is repeated  $J$  times, and the average of the moments is computed. In the table,  $T$  equals 1000 periods, and  $J$  equals 1000 repetitions. The economy is simulated with one shock, while other shocks are excluded due to the large size of the state-space.

## 6.1 Dynamic property of monetary-fiscal policy and consumption

Table 2 presents the moments for inflation, consumption, and the tax rate in both the consolidated and unconsolidated models. Each panel displays the moments for each shock. Given the size of the state-space, I simulate the model with one shock at a time, excluding the others. The optimal policy is under discretion rather than commitment, as studied in [Chari, Christiano, and Kehoe \(1991\)](#); [Schmitt-Grohé and Uribe \(2004\)](#), which makes direct numerical comparisons with the literature challenging. The volatility of the inflation rate is generally low for all shocks, reflecting the application of optimal monetary and fiscal policy.

The main results are as follows: (i) inflation is more volatile in the unconsolidated model across all shocks; (ii) the average inflation rate increases, though the rise is small; (iii) while the tax rate is more volatile in response to productivity and government expenditure shocks in the unconsolidated model, it is less volatile for cost-push shocks; and (iv) the volatility of consumption is minimally affected.

First, I provide the intuition for the cost-push shock. In the consolidated model, the volatility of inflation and consumption is caused by the cost-push shock, which affects marginal costs. A positive cost-push shock raises inflation and reduces consumption. The volatility of the tax rate arises because the government seeks to align marginal cost with marginal product. When marginal costs rise, it becomes optimal to lower the sales tax rate, as a lower tax rate increases the marginal

product. This mechanism is evident in the correlations with the shock: inflation is positively correlated, while consumption and the tax rate are negatively correlated with the shock.

In the unconsolidated model, inflation is more volatile, and the tax rate is less volatile compared to the consolidated model. This is because the issuance of reserves is constrained—large reserves cannot be reduced through remittances. As a result, the central bank does not issue enough reserves and cannot provide sufficient support to the Treasury. The limited ability to reduce taxes in response to the cost-push shock reduces the volatility of the tax rate in the unconsolidated model. Consequently, inflation volatility is higher because changes in the sales tax rate do not sufficiently offset the cost-push shock.

Let me explain the intuition for the consolidated model in response to a public expenditure shock. When a public expenditure shock occurs, the government raises tax rates to finance the increased expenditure. However, since taxes are distortionary, the government smoothes this adjustment over time. This is evident in the high positive correlation between taxes and the public expenditure shock, as well as the high autocorrelation of the tax rate. Consumption is crowded out following a public expenditure shock, and the government increases the inflation rate to reduce the real value of debt, as debt levels rise after the shock. This is reflected in the negative correlation between consumption and the shock, and the positive correlation between inflation and the shock. The volatility of the inflation rate arises from the government's efforts to reduce the real value of debt, while the volatility of the tax rate stems from tax smoothing.

Although the government uses inflation to reduce the real value of debt, this motive is quantitatively small because inflation is costly. In the consolidated model, the volatility of inflation is low, with a standard deviation of less than 0.1 percentage points. While the government has an incentive to use inflation to lower nominal liabilities, the cost of inflation due to price stickiness outweighs the benefits. [Schmitt-Grohé and Uribe \(2004\)](#) find similar results under a Ramsey equilibrium, and while my model operates under discretion, the findings are consistent.

In the unconsolidated model, the volatility of inflation, consumption, and the tax rate is higher than in the consolidated model. The key issue is the government's tax smoothing motive. When faced with a public expenditure shock, the government seeks to smooth tax distortions over time by issuing liabilities. The central bank can issue reserves to support the Treasury's budget by providing resources. However, in the unconsolidated model, the issuance of reserves is constrained, limiting

the government's ability to smooth taxes. The volatility of the sales tax leads to volatility in output and inflation through firms' first-order conditions. In summary, the lack of fiscal backing in the unconsolidated model restricts the government's ability to smooth taxes.

## 6.2 Persistency of liabilities and taxes

An important result in the public finance literature is the idea of smoothing tax distortions over time. [Lucas and Stokey \(1983\)](#) show that bonds inherit the stochastic process of exogenous shocks. This implies that if shocks are serially uncorrelated, bonds should also follow an uncorrelated process. However, [Barro \(1979\)](#) and [Aiyagari et al. \(2002\)](#) demonstrate that Lucas and Stokey's results depend on the assumption that the government can issue state-contingent debt. They show that, in the absence of state-contingent debt, bonds follow a near random walk behavior, regardless of the process assumed for the shocks. This paper examines the process of liabilities and taxes in a setting with non-state-contingent nominal debt and sticky prices, similar to [Schmitt-Grohé and Uribe \(2004\)](#).

The consolidated model in this paper is a standard New Keynesian framework, similar to [Schmitt-Grohé and Uribe \(2004\)](#). The key deviation from the literature is the inclusion of reserves. In the data, reserves are significantly large, making it interesting to study their behavior. The purpose of this section is to investigate whether both reserves and bonds follow a near random walk under discretion. Additionally, this paper explores the implications of the lack of fiscal backing: does the absence of fiscal backing change the stochastic behavior of reserves and bonds? Moreover, does it alter the properties of taxation?

Table 3 presents the moments for reserves, bonds, and tax rates. In the consolidated model, both reserves and bonds exhibit persistent behavior across all types of shocks, consistent with the findings of [Schmitt-Grohé and Uribe \(2004\)](#). The autocorrelations of reserves and bonds are close to one, indicating their highly persistent nature.

Both reserves and bonds show near random walk property. Government uses both to smooth tax. Households get convenience yield from reserves and bonds that are imperfect substitute. If government uses only one of reserves or bonds to smooth tax, marginal utility of that liability is higher than the other and this is not optimal.

For taxes, while the autocorrelation is high for productivity and public expenditure shocks, it

**Table 2:** Dynamic Properties of the Optimal Policy

Variable	Mean	Std. Dev.	Auto. Corr.	Corr w/ Shock
<i>Consolidated Model with Cost-Push Shock</i>				
$\pi$	1.741	0.0862	0.93	0.81
$c_t$	88.5	0.14	0.84	-0.94
$\tau_t$	10.2	0.52	0.57	-0.78
<i>Unconsolidated Model with Cost-Push Shock</i>				
$\pi$	1.803	0.0898	0.90	0.82
$c_t$	88.5	0.14	0.79	-0.96
$\tau_t$	10.3	0.43	0.49	-0.80
<i>Consolidated Model with Productivity Shock</i>				
$\pi$	1.759	0.0120	0.93	-0.84
$c_t$	88.5	0.010	0.73	1.00
$\tau_t$	10.2	0.094	0.90	-0.89
<i>Unconsolidated Model with Productivity Shock</i>				
$\pi$	1.767	0.0130	0.91	-0.85
$c_t$	88.5	0.010	0.74	1.00
$\tau_t$	10.3	0.097	0.87	-0.94
<i>Consolidated Model with Public Expenditure Shock</i>				
$\pi$	1.765	0.0615	0.93	0.80
$c_t$	88.5	0.643	0.72	-1.00
$\tau_t$	10.3	0.473	0.88	0.88
<i>Unconsolidated Model with Public Expenditure Shock</i>				
$\pi$	1.839	0.0791	0.93	0.76
$c_t$	88.5	0.647	0.71	-1.00
$\tau_t$	10.3	0.482	0.86	0.91

Notes:  $\pi$  and  $\tau$  are expressed in percentage points, and  $c$  is in levels.

is lower for cost-push shocks. This difference reflects the government's tax-smoothing motive for productivity and public expenditure shocks, where taxes are adjusted over time. For cost-push shocks, however, the government adjusts sales taxes to offset the shock's impact on marginal costs, which leads to a lower autocorrelation.

In the case of a public expenditure shock, taxes are used primarily to finance the increase in public spending. For a productivity shock, taxes are adjusted to compensate for changes in tax revenue due to fluctuations in output. In both cases, the government uses taxes to finance public expenditures, resulting in a strong tax-smoothing motive. In contrast, during a cost-push shock, sales taxes are adjusted to influence marginal costs in response to the shock, leading to a tax process that closely follows the process of the shock, thus explaining the lower autocorrelation.

In the unconsolidated model, the lack of fiscal backing causes reserves to become more persistent and bonds less persistent across all types of shocks. For reserves, the mechanism is similar for all shocks: once the central bank issues reserves, the ability to reduce them through remittance is limited. As a result, reserves decrease slowly, leading to higher persistence.

For bonds, the persistence is lower in the unconsolidated model. This occurs because the response of bonds to shocks is larger in the unconsolidated model than in the consolidated model. After this larger response, bonds return to their steady-state, making them more volatile and less persistent. Why is the response of bonds larger?

In the consolidated model, the increased demand for liabilities is distributed between reserves and bonds, as the government utilizes both to generate resources. However, in the unconsolidated model, the central bank's ability to use reserves for tax smoothing is constrained. As a result, the government relies more heavily on bonds to create resources, making bonds more responsive to shocks and more volatile. Consequently, bonds exhibit less persistence in the unconsolidated model.

### **6.3 Implications on retained earnings**

This section discusses the relationship between the model and the actual policies of central banks. A key feature of my model is the transfers between the central bank and the Treasury, which naturally raises the question of how central banks decide on their remittances in practice. An important observation is that many central banks retain part of their earnings and do not transfer the entire

**Table 3:** Autocorrelation of Reserves, Bonds, and Tax

Reserves	Bonds	Tax on Sales
<i>Consolidated Model with Cost-Push Shock</i>		
0.97	0.97	0.57
<i>Unconsolidated Model with Cost-Push Shock</i>		
0.99	0.96	0.49
<i>Consolidated Model with Productivity Shock</i>		
0.98	0.98	0.90
<i>Unconsolidated Model with Productivity Shock</i>		
0.99	0.94	0.87
<i>Consolidated Model with Public Expenditure Shock</i>		
0.97	0.97	0.88
<i>Unconsolidated Model with Public Expenditure Shock</i>		
0.99	0.96	0.86

*Notes:* Reserves, bonds, and tax rate are in levels.

profit to the Treasury.

In the UK, the remittance policy depends on the central bank's net worth. If the Bank of England's net worth is below a target level, all profits are retained to boost net worth. If net worth is above the target but below a ceiling level, half of the profits go to the Treasury, while the other half is added to capital. If net worth exceeds the ceiling, all profits are transferred to the Treasury<sup>7</sup>. In Japan, 5% of the Bank of Japan's profits are retained, with the remaining 95% transferred to the Treasury. Given the large BOJ's balance sheet, the retained earnings at BOJ is significant.<sup>8</sup>

In summary, BOE and BOJ retain a portion of their profits and do not transfer the entire amount to the Treasury. The Federal Reserve, however, is an exception. In the U.S., the Federal Reserve Act requires the Reserve Banks to remit excess earnings to the U.S. Treasury after covering operating costs. This implies that, during periods when profits exceed costs, remittances are equal to profits, and the Federal Reserve does not accumulate its net worth.

Can the unconsolidated model replicate the fact that central banks do not transfer their entire profit? Is the unconsolidated model more consistent with actual practice than the consolidated

<sup>7</sup>See here for details on the BoE's remittance policy.

<sup>8</sup>In 2023, the ratio of profit earned by BOJ to tax revenues collected by Japanese Treasury is 7%, showing a significant fiscal support from BOJ to Treasury.



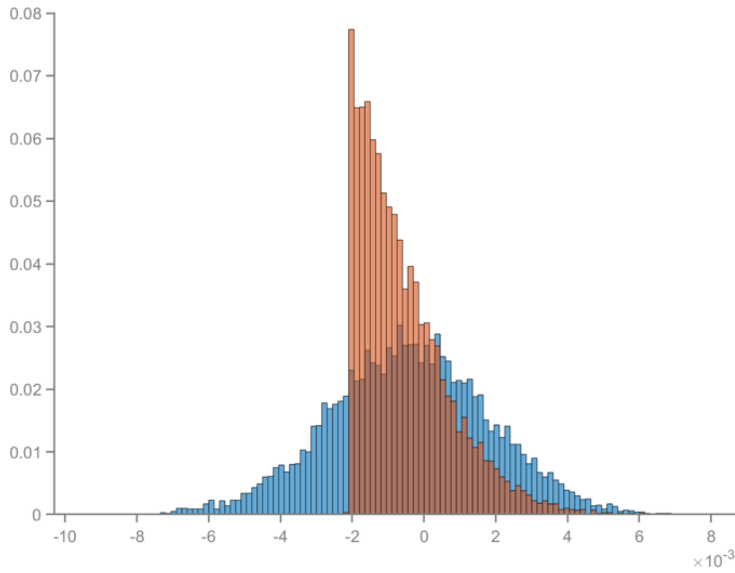
model? The answer is yes: the unconsolidated model is more consistent with real-world central bank policies.

Figure 6 presents a histogram of remittances over the business cycle in both the consolidated and unconsolidated models. I simulate the economy for 1000 periods and generate a sequence of remittances for both models. The histograms display remittances in the consolidated model (blue) and the unconsolidated model (red). The left side shows cases where the central bank receives transfers, while the right side shows cases where the Treasury receives remittances.

In the unconsolidated model, there is a lower bound on remittances, meaning the central bank cannot receive more than a certain threshold. Notably, remittances take on higher values less frequently in the unconsolidated model compared to the consolidated model, particularly at the right tail of the histogram. While the unconsolidated model imposes a lower bound on remittances, this constraint also affects the upper tail of the remittance distribution, making it thinner. Intuitively, if the central bank prints more reserves and transfers more to the Treasury, the excess reserves cannot be reduced through remittances due to the constraint. As a result, the central bank chooses not to transfer more. This behavior aligns with the actual practice of central banks, where remittances are often lower due to retained earnings.

## 7 Welfare analysis

This section aims to analyze the welfare gain of fiscal backing for central bank. Interestingly, different government choose different stance for fiscal backing. In UK, there is agreement between central bank and Treasury that any losses caused by central bank's asset purchase policy is compensated by Treasury. Since the loss created by Bank of England is large, there is discussion about if Treasury should compensate central bank's loss as central bank's loss is essentially compensated by household's tax. The model in this paper includes the cost and benefit of fiscal backing. The cost is that the increase of distortionary tax: the central bank's loss is compensated by distortionary tax. The loss is the impact of monetary and fiscal policy. This section quantitatively evaluates the welfare gain.



**Figure 6:** The histogram of remittance in the consolidated and unconsolidated model.

Note: This figure shows a histogram remittance in the consolidated and unconsolidated model. I simulate an economy for 1000 periods and obtain a sequence of remittance for both models. An underlying exogenous shock is cost-push shock. I show it as a histogram after normalization so that an area is equal to one.

## 7.1 Unconditional welfare loss

I compute unconditional welfare losses under optimal policy, evaluating the utility of households (1), both in the unconsolidated and consolidated model. Welfare losses are obtained averaging the discounted losses across 10000 simulations, of the initial states  $(s_0, d_0, b_0)$  from their steady-state values, each 1000 periods long.<sup>9</sup> I obtained welfare loss for two models compared to their own steady-state.

Table 4 shows the welfare cost of business cycle in the consolidated and unconsolidated model. Welfare losses are expressed in terms of their welfare equivalent permanent consumption reduction in percent. The welfare losses associated with cyclical fluctuation is fairly small in absolute size as is usually the case in New Keynesian models.

The difference of welfare loss between the consolidated and unconsolidated model is fairly small. The largest difference is productivity shock, but it is 0.003% of permanent consumption.

<sup>9</sup>To exclude the impact of initial state on welfare calculation, I through away the first 100 periods from the simulated 1000 periods. Also,  $(s_0, d_0, b_0)$  is the stochastic steady-state.

**Table 4:** Unconditional Welfare Loss

	Consolidated	Unconsolidated
<i>Cost-push shock</i>	-0.000698	-0.000864
<i>Productivity shock</i>	-0.021491	-0.024720
<i>Public expenditure shock</i>	-0.002692	-0.003323

*Notes:* I compute unconditional welfare losses under optimal policy, evaluating the utility of households in both the unconsolidated and consolidated models. Welfare losses are calculated by averaging the discounted losses across 10,000 simulations, with the initial states  $(s_0, d_0, b_0)$  set to their steady-state values. Each simulation lasts for 1,000 periods.

The difference is much smaller for public expenditure and cost-push shock.

A good comparison of this model is model with zero lower bound on nominal interest rate. [Adam and Billi \(2007\)](#) shows that the existence of zero lower bound lowers the welfare loss by 0.003% under the discretionary policy and 0.0001% under the commitment policy.

## 7.2 Conditional welfare loss

This section presents the welfare loss conditional on the size of the shock. This section aims to demonstrate that the larger the shock, the greater the welfare loss from the lack of fiscal backing: the difference in welfare between the consolidated and unconsolidated models.

The procedure is as follows: First, I feed an exogenous path of cost-push shocks into the model. A positive cost-push shock reduces household utility. I then compute the perpetual consumption transfer necessary to make household utility after the shock equivalent to that of households in the steady state. For instance, with no shock, there is zero welfare loss. If a cost-push shock increases by 2%, households are worse off by 0.02% of consumption. For each shock size, I compute the welfare cost of the shock. Second, I perform the same exercise for both the consolidated and unconsolidated models. The initial conditions for each model are set to the steady-state values of reserves and bonds.

Figure 7 presents the results. The horizontal axis represents the size of the shock, measured as a percentage increase in the wage mark-up, ranging from zero to 9%. The vertical axis shows the

welfare cost of the cost-push shock, expressed as a percentage of consumption equivalence. The red line represents the welfare cost in the unconsolidated model, while the blue line represents the cost in the consolidated model.

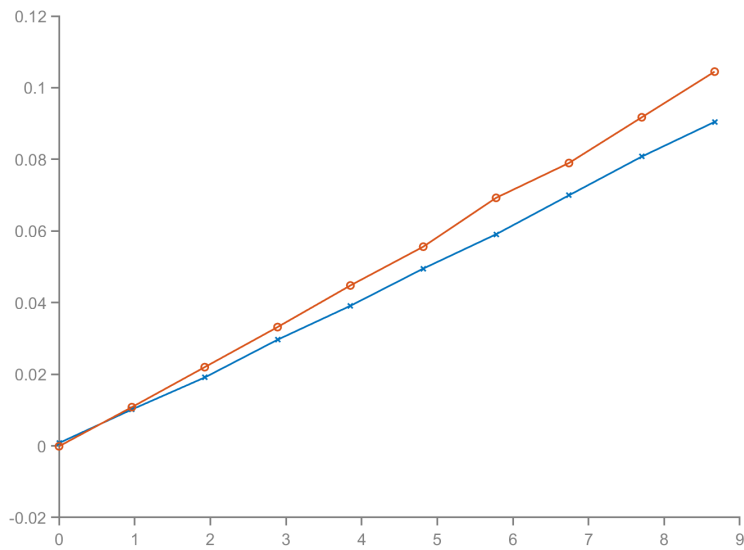
First, the welfare cost increases with the size of the shock. This occurs because a positive cost-push shock leads to a drop in consumption and an increase in the inflation rate. Second, the welfare cost of the cost-push shock is consistently higher in the unconsolidated model compared to the consolidated model. This is by construction, as the equilibrium in the unconsolidated model is always feasible in the consolidated model, leading to higher welfare in the latter. Third, the gap between the two models widens as the size of the shock increases. For example, when the cost-push shock is a 9% increase, the welfare cost is 0.11% of consumption in the unconsolidated model and 0.9% in the consolidated model. This is because, as the shock grows larger, the constraint on remittances binds for a longer period.

The welfare loss in the unconsolidated model arises from an insufficient tax break due to the lack of fiscal backing. When a cost-push shock occurs, the Treasury seeks to implement a tax break, and the central bank supports this by transferring resources to the Treasury. However, in the unconsolidated model, this support is limited, resulting in an insufficient tax break. As a result, the cost-push shock is not fully mitigated, leading to lower consumption and higher inflation, both of which are costly in terms of welfare.

## **8 Conclusion**

A common assumption in conventional macroeconomic models of monetary-fiscal policy is a consolidated government budget. However, in practice, the Federal Reserve does not receive funds from Treasury when it incurs a loss. This paper studies optimal monetary and fiscal policy when Treasury is unable to provide optimal fiscal backing to the central bank: the unconsolidated government budget.

I analyze the optimal monetary and fiscal policy in a New Keynesian model with central bank and Treasury, where the transfer of resources from Treasury to the central bank is constrained. This lack of fiscal backing implies: (i) the central bank, without fiscal backing, tolerates higher inflation in response to cost-push shocks, and this inflation response increases with the level of reserves;



**Figure 7:** The welfare gain of fiscal backing and size of shock.

Note: This figure shows The welfare gain of fiscal backing and size of shock. The horizontal axis is the size of shock represented by percentage point. The vertical axis is the welfare cost of cost-push shock represented by consumption equivalence in percentage point. The red is the welfare cost in the unconsolidated mode. The blue is that in consolidated model.

(ii) while the lack of fiscal backing increases the volatility of the optimal inflation rate by 3%, the average optimal inflation rate is minimally affected; (iii) the welfare gains from fiscal backing are small over the business cycle, but in the case of large shocks, a fiscal backstop reduces the welfare cost of the shock by 20%.

Finally, I discuss several avenues for future research. First, in this model, a single agent, “the government”, jointly sets both monetary and fiscal policy. However, my model distinguishes between the central bank and the Treasury, so a natural extension would be to allow the central bank to set monetary policy and the Treasury to set fiscal policy. To implement this, each authority would need its own policy objectives and a specified timing protocol. A plausible assumption is that the monetary authority prioritizes inflation stabilization more than the fiscal authority (Rogoff, 1985).

Second, while this model imposes a lower bound on remittances, my model cannot explain why such a constraint exists. One possible reason could be that the central bank values its independence and seeks to avoid reliance on fiscal backing. Since the benefits of maintaining central bank independence lie outside the model, an extension could involve endogenizing the constraint on remittances.

## References

- Adam, Klaus and Roberto M Billi. 2007. “Discretionary monetary policy and the zero lower bound on nominal interest rates.” *Journal of monetary Economics* 54 (3):728–752.
- Afonso, Gara and Ricardo Lagos. 2015. “Trade dynamics in the market for federal funds.” *Econometrica* 83 (1):263–313.
- Aiyagari, S Rao, Albert Marcet, Thomas J Sargent, and Juha Seppälä. 2002. “Optimal taxation without state-contingent debt.” *Journal of Political Economy* 110 (6):1220–1254.
- Amador, Manuel and Javier Bianchi. 2023. “Helicopter Drops and Liquidity Traps.” Tech. rep., National Bureau of Economic Research.
- Arce, Oscar, Galo Nuno, Dominik Thaler, and Carlos Thomas. 2020. “A large central bank balance sheet? Floor vs corridor systems in a New Keynesian environment.” *Journal of monetary economics* 114:350–367.

- Barro, Robert J. 1979. "On the determination of the public debt." *Journal of political Economy* 87 (5, Part 1):940–971.
- Bassetto, Marco and Todd Messer. 2013. "Fiscal consequences of paying interest on reserves." *Fiscal Studies* 34 (4):413–436.
- Bassetto, Marco and Thomas J Sargent. 2020. "Shotgun wedding: Fiscal and monetary policy." *Annual Review of Economics* 12:659–690.
- Benigno, Pierpaolo. 2020. "A central bank theory of price level determination." *American Economic Journal: Macroeconomics* 12 (3):258–283.
- Benigno, Pierpaolo and Salvatore Nisticò. 2020. "Non-neutrality of open-market operations." *American Economic Journal: Macroeconomics* 12 (3):175–226.
- Benigno, Pierpaolo and Michael Woodford. 2003. "Optimal monetary and fiscal policy: A linear-quadratic approach." *NBER macroeconomics annual* 18:271–333.
- Berentsen, Aleksander, Sébastien Kraenzlin, and Benjamin Müller. 2018. "Exit strategies for monetary policy." *Journal of Monetary Economics* 99:20–40.
- Berentsen, Aleksander, Alessandro Marchesiani, and Christopher J Waller. 2014. "Floor systems for implementing monetary policy: Some unpleasant fiscal arithmetic." *Review of Economic Dynamics* 17 (3):523–542.
- Berriel, Tiago C and Saroj Bhattarai. 2009. "Monetary policy and central bank balance sheet concerns." *The BE Journal of Macroeconomics* 9 (1).
- Bianchi, Francesco. 2013. "Regime switches, agents' beliefs, and post-World War II US macroeconomic dynamics." *Review of Economic studies* 80 (2):463–490.
- Bianchi, Francesco and Cosmin Ilut. 2017. "Monetary/fiscal policy mix and agents' beliefs." *Review of economic Dynamics* 26:113–139.
- Bianchi, Javier and Saki Bigio. 2022. "Banks, liquidity management, and monetary policy." *Econometrica* 90 (1):391–454.

- Blanchard, Olivier and Jordi Galí. 2007. “Real wage rigidities and the New Keynesian model.” *Journal of money, credit and banking* 39:35–65.
- Bullock, Michele. 2022. “Review of the Bond Purchase Progra.” *Reserve Bank of Australia* .
- Carpenter, Seth, Jane Ihrig, Elizabeth Klee, Daniel Quinn, and Alexander Boote. 2018. “The Federal Reserve’s balance sheet and earnings: a primer and projections.” *39th Issue (March 2015) of the International Journal of Central Banking* .
- Chari, Varadarajan V, Lawrence J Christiano, and Patrick J Kehoe. 1991. “Optimal fiscal and monetary policy: Some recent results.” *Journal of Money, Credit and Banking* 23 (3):519–539.
- Christensen, Jens HE, Jose A Lopez, and Glenn D Rudebusch. 2015. “A probability-based stress test of Federal Reserve assets and income.” *Journal of Monetary Economics* 73:26–43.
- Chugh, Sanjay K. 2006. “Optimal fiscal and monetary policy with sticky wages and sticky prices.” *Review of Economic Dynamics* 9 (4):683–714.
- . 2007. “Optimal inflation persistence: Ramsey taxation with capital and habits.” *Journal of Monetary Economics* 54 (6):1809–1836.
- Cochrane, John H. 2014. “Monetary policy with interest on reserves.” *Journal of Economic Dynamics and Control* 49:74–108.
- Coleman, Wilbur John. 1991. “Equilibrium in a production economy with an income tax.” *Econometrica: Journal of the Econometric Society* :1091–1104.
- Curdia, Vasco and Michael Woodford. 2011. “The central-bank balance sheet as an instrument of monetary policy.” *Journal of Monetary Economics* 58 (1):54–79.
- Del Negro, Marco and Christopher A Sims. 2015. “When does a central bank’s balance sheet require fiscal support?” *Journal of Monetary Economics* 73:1–19.
- D’Amico, Stefania and Thomas B King. 2013. “Flow and stock effects of large-scale treasury purchases: Evidence on the importance of local supply.” *Journal of financial economics* 108 (2):425–448.



- Eichengreen, Barry and Poonam Gupta. 2015. “Tapering talk: The impact of expectations of reduced Federal Reserve security purchases on emerging markets.” *Emerging Markets Review* 25:1–15.
- Ennis, Huberto M. 2018. “A simple general equilibrium model of large excess reserves.” *Journal of Monetary Economics* 98:50–65.
- Floden, Martin. 2022. “My thoughts on the Riksbank’s asset purchases.” *Riksbank* .
- Gertler, Mark and Peter Karadi. 2011. “A model of unconventional monetary policy.” *Journal of monetary Economics* 58 (1):17–34.
- Goncharov, Igor, Vasso Ioannidou, and Martin C Schmalz. 2023. “(Why) do central banks care about their profits?” *The Journal of Finance* 78 (5):2991–3045.
- Hall, Robert E and Ricardo Reis. 2015. “Maintaining central-bank financial stability under new-style central banking.” Tech. rep., National Bureau of Economic Research.
- Krishnamurthy, Arvind and Annette Vissing-Jorgensen. 2011. “The effects of quantitative easing on interest rates: channels and implications for policy.” Tech. rep., National Bureau of Economic Research.
- . 2012. “The aggregate demand for treasury debt.” *Journal of Political Economy* 120 (2):233–267.
- Lagos, Ricardo and Gastón Navarro. 2023. “Monetary policy operations: Theory, evidence, and tools for quantitative analysis.” Tech. rep., National Bureau of Economic Research.
- Leeper, Eric M. 1991. “Equilibria under ‘active’ and ‘passive’ monetary and fiscal policies.” *Journal of monetary Economics* 27 (1):129–147.
- Leeper, Eric M, Campbell Leith, and Ding Liu. 2021. “Optimal time-consistent monetary, fiscal and debt maturity policy.” *Journal of Monetary Economics* 117:600–617.
- Leeper, Eric M and Xuan Zhou. 2021. “Inflation’s role in optimal monetary-fiscal policy.” *Journal of Monetary Economics* 124:1–18.

- Lopez-Salido, David and Annette Vissing-Jorgensen. 2023. "Reserve demand, interest rate control, and quantitative tightening." *Federal Reserve Board, January 10*.
- Lucas, Robert E Jr and Nancy L Stokey. 1983. "Optimal fiscal and monetary policy in an economy without capital." *Journal of monetary Economics* 12 (1):55–93.
- Marcet, Albert and Ramon Marimon. 2019. "Recursive contracts." *Econometrica* 87 (5):1589–1631.
- Niemann, Stefan and Paul Pichler. 2011. "Optimal fiscal and monetary policies in the face of rare disasters." *European Economic Review* 55 (1):75–92.
- Niemann, Stefan, Paul Pichler, and Gerhard Sorger. 2013. "Public debt, discretionary policy, and inflation persistence." *Journal of Economic Dynamics and Control* 37 (6):1097–1109.
- Poole, William. 1968. "Commercial bank reserve management in a stochastic model: implications for monetary policy." *The Journal of finance* 23 (5):769–791.
- Reis, Ricardo. 2016. "Funding quantitative easing to target inflation." .
- Rogoff, Kenneth. 1985. "The optimal degree of commitment to an intermediate monetary target." *The quarterly journal of economics* 100 (4):1169–1189.
- Rotemberg, Julio J. 1982. "Sticky prices in the United States." *Journal of political economy* 90 (6):1187–1211.
- Sargent, Thomas J and Neil Wallace. 1981. "Some unpleasant monetarist arithmetic." *Federal reserve bank of minneapolis quarterly review* 5 (3):1–17.
- Schmitt-Grohé, Stephanie and Martin Uribe. 2004. "Optimal fiscal and monetary policy under sticky prices." *Journal of economic Theory* 114 (2):198–230.
- Sims, Christopher A. 1994. "A simple model for study of the determination of the price level and the interaction of monetary and fiscal policy." *Economic theory* 4:381–399.
- Siu, Henry E. 2004. "Optimal fiscal and monetary policy with sticky prices." *Journal of Monetary Economics* 51 (3):575–607.

Stella, Peter. 2005. “Central bank financial strength, transparency, and policy credibility.” *IMF staff papers* 52 (2):335–365.

———. 2008. “Central bank financial strength, policy constraints and inflation.” .

Vissing-Jorgensen, Annette. 2023. “Balance sheet policy above the ELB.” *Macroeconomic Stabilisation in a Volatile Inflation Environment* .

Williamson, Stephen D. 2019. “Interest on reserves, interbank lending, and monetary policy.” *Journal of Monetary Economics* 101:14–30.

Woodford, Michael. 2001. “Fiscal requirements for price stability.”

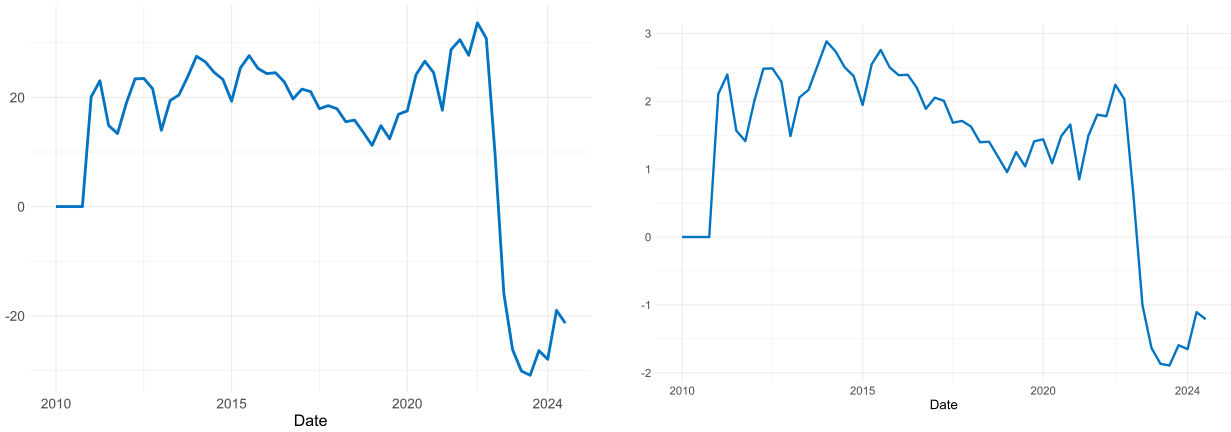
## Appendix A Data on Remittance

This section describes the data on remittances between the Treasury and the Federal Reserve. The data are available in FRED as “Earnings Remittances Due to the U.S. Treasury.”. This dataset records weekly remittances to the U.S. Treasury through September 2022. After that date, it reflects the Federal Reserve’s deferred asset, which represents its cumulative loss.

Figure 8 illustrates the transfers between the U.S. Treasury and the Federal Reserve. Before September 2022, I plot the direct “transfers to the U.S. Treasury” as shown in FRED. After September 2022, since FRED shows cumulative losses, I calculate the loss flow by taking the difference between successive data points. In fact, there are no transfers between the Treasury and the Federal Reserve after 2022, so the data for this period reflect the Federal Reserve’s losses. The time horizon is quarterly.

Figure 8-(a) shows the transfers in billions of dollars. Prior to 2022, the Federal Reserve earned an average of about \$20 billion per quarter and transferred it to the Treasury. The cumulative transfers from January 2011 to September 2022 are \$996 billion, or 5% of annual GDP. After 2022, the losses are about \$20 billion. The cumulative loss from September 2022 to October 2024 is \$210 billion. To examine the fiscal impact, figure 8-(b) shows the ratio of remittances to federal government spending as a percentage. Before 2022, this ratio averages 2%, indicating that Federal Reserve profits financed about 2% of federal government spending. After 2022, this ratio shifts to

-2%, meaning that the Federal Reserve’s losses effectively increase federal government spending by an additional 2%.



(a) In billion dollars.

(b) Divided by Federal Expenditure.

**Figure 8:** Remittance between Treasury and Federal Reserves

*Note:* This figure illustrates the remittances between the U.S. Treasury and the Federal Reserve. Before September 2022, I plot “Earnings Remittances Due to the U.S. Treasury” directly, as shown in FRED. After September 2022, because FRED shows cumulative losses, I calculate and plot the flow of losses by taking the difference between successive data points. Figure (a) is in billions of dollars. Figure (b) is remittances divided by federal spending, expressed in percent. The time horizon is quarters.

## Appendix B Details on calibration

This section describes details on calibration. Key parameters are  $\gamma_1$  and  $\gamma_2$  that declines the curvature of utility in convenience yield term.

In the Euler equation for reserves, a price of reserves ( $Q^C$  in the left hand side) depends on the quantity of reserves ( $d_t$  in the right hand side).

$$\text{(Euler for reserve)} \quad C_t^{-\sigma} Q_t^C = \beta E_t \left[ \frac{C_{t+1}^{-\sigma}}{\pi_{t+1}} \right] + \chi_1 (Q_t^C d_t)^{-\gamma_1} Q_t^C \quad (42)$$

When I take the left-hand side derivative with respect to  $d_t$ , this derivative depends on  $\gamma_1$ . That suggests that the elasticity of price to quantity is declined by  $\gamma_1$ . High  $\gamma_1$  means that the elasticity is higher i.e, the slope of the demand curve is steep. Low  $\gamma_1$  means that the elasticity is lower i.e, the slope of the demand curve is flat. Although this is not mathematically very precise, I confirmed

that in equilibrium, the elasticity of price to quantity decreases with  $\gamma_1$ .

The purpose of this calibration is to match the price elasticity in data to that in model. I run regression both in model and data.

In the model, I simulate the economy and obtain the sequence of the left-hand side and  $\frac{b_t^C}{Y_t}$  in equation (44) and  $\frac{b_t^T}{Y_t}$  in equation (48). Then, I obtain estimated  $\beta_1$  and  $\beta_3$  by running time-series regression of (44) and (48). The  $\beta_1$  and  $\beta_3$  are negative and decreases with  $\gamma_1$  and  $\gamma_2$ .

In data, I also estimate equations (46) and (49). For reserves, I control deposits following [Vissing-Jorgensen \(2023\)](#). For bonds, I follow [Krishnamurthy and Vissing-Jorgensen \(2012\)](#). I use data from 2009 to 2020. The frequency of data is quarterly. EFR represents the effective fed fund rate. IOR represents interest rate on reserves. Reserves are 'Reserve Balances with Federal Reserve Banks' in FRED. All data is available on FRED.

For reserves and  $\gamma_1$

$$\text{model } r_t - i_t = \beta_0 + \beta_1 \log\left(\frac{d_t}{Y_t}\right) + \epsilon_t \quad (43)$$

$$r_t \equiv \beta E_t \left[ \frac{C_{t+1}^{-\sigma}}{\pi_{t+1}} \right] \frac{1}{C_t^{-\sigma}} \quad (44)$$

$$i_t \equiv \frac{1}{Q_t^d}. \quad (45)$$

$$\text{data } \text{EFR}_t - \text{IOR}_t = \tilde{\beta}_0 + \tilde{\beta}_1 \log\left(\frac{\text{Reserve}_t}{\text{GDP}_t}\right) + \log(\text{Deposit}_t) + \epsilon_t. \quad (46)$$

I proxy the effective fed fund rate in data as  $r_t$  that is the hypothetical nominal interest rate obtained if there is no convenience value for reserves.  $i_t$  in the model is the price of reserves when there is a convenience yield for reserves.

For  $\gamma_2$  and bonds. For Treasury yield, I use yield of 1 month, 3 month, and 6 month maturity's bonds. Both Treasury yield and effective federal funds rate are annualized. Federal liability is Federal government's liability in FRED.

$$\text{model } r_t - i_t^T = \beta_2 + \beta_3 \log\left(\frac{b_t}{Y_t}\right) + \epsilon_t \quad (47)$$

$$i_t^T \equiv \frac{1}{Q_t^b}. \quad (48)$$

$$\text{data } \text{EFR}_t - \text{Treasury yield}_t = \tilde{\beta}_2 + \tilde{\beta}_3 \log\left(\frac{\text{Federal liability}_t}{\text{GDP}_t}\right) + \epsilon_t. \quad (49)$$

Table 5 and 6 show estimated results. In data, the estimated  $\tilde{\beta}_1$  are significantly negative, that is a demand curve is downward-sloping. I target  $\tilde{\beta}_1 = -0.2$ . For bonds, I target  $\tilde{\beta}_3 = -0.1$ . I choose  $\gamma_1$  and  $\gamma_2$  so that I have  $\tilde{\beta}_1 = -0.2$ . and  $\tilde{\beta}_3 = -0.1$ .

## Appendix C Solution methods

I use the collocation method with time iteration. A grid of  $N$  interpolation nodes is defined over the state space  $S_t \equiv (s_t, b_{t-1}, d_{t-1})$ , where  $s_t$  represents an exogenous shock out of three exogenous shock,  $s_t \in \{\mu_t^w, A_t, G_t\}$ . Due to the size of the state space, I include one shock at a time, chosen from cost-push, productivity, or public expenditure shocks. This model has three state variables.

The Markov Perfect Equilibrium consists of policy functions  $C(S_t)$ ,  $N(S_t)$ ,  $\pi(S_t)$ ,  $Q^C(S_t)$ ,  $Q^T(S_t)$ ,  $b(S_t)$ ,  $d(S_t)$ ,  $\tau(S_t)$ ,  $H(S_t)$ , that solves the government's problem when the expectation terms in the Euler equations for reserves and bonds, and New Keynesian Philips Curve are given by

$$E_t \left[ \frac{C_{t+1}^{-\sigma}}{\pi_{t+1}} \right] = \int \frac{C(S_{t+1}(\varepsilon^s))^{-\sigma}}{\pi(S_{t+1}(\varepsilon^s))} f(\varepsilon^s) d(\varepsilon^s) \quad (50)$$

$$E_t \left[ C_{t+1}^{-\sigma} \frac{1 + \rho^T Q_{t+1}^T}{\pi_{t+1}} \right] = \int C(S_{t+1}(\varepsilon^s))^{-\sigma} \frac{1 + \rho^T Q^T(S_{t+1}(\varepsilon^s))}{\pi(S_{t+1}(\varepsilon^s))} f(\varepsilon^s) d(\varepsilon^s) \quad (51)$$

$$E_t [N_{t+1} C_{t+1}^{-\sigma} \varphi(\pi_{t+1} - 1) \pi_{t+1}] = \int N(S_{t+1}(\varepsilon^s)) C(S_{t+1}(\varepsilon^s))^{-\sigma} \varphi(\pi(S_{t+1}(\varepsilon^s)) - 1) \pi(S_{t+1}(\varepsilon^s)) f(\varepsilon^s) d(\varepsilon^s), \quad (52)$$

where

$$S_{t+1}(\varepsilon^s) \equiv (\bar{s} + \rho^s(s_t - \bar{s}) + \varepsilon^s, b_t(S_t), d_t(S_t)), \quad (53)$$

and  $f(\varepsilon^s)$  is the probability density distribution of innovations.

The expectations are evaluated at each interpolation  $N$  nodes using  $M$  node Gaussian-Hermite quadrature. My numerical algorithm is as follows

Step1: Guess initial policy functions for choice variables at the interpolation nodes  $N$ .

Step2: At each interpolation nodes  $N$ , compute the expectations (50)-(52) implied by the current guessed policy functions. Then, using the first-order conditions of the optimal policy prob-

**Table 5**

	<i>Dependent variable:</i>	
	EFR <sub>t</sub> – IOR <sub>t</sub>	
	(1)	(2)
log(res_gdp)	–0.165*** (0.026)	–0.297*** (0.024)
log(dep_gdp)		0.020*** (0.003)
Constant	0.297*** (0.062)	0.667*** (0.064)
Observations	36	36
R <sup>2</sup>	0.545	0.827
<i>Note:</i>	*p<0.1; **p<0.05; ***p<0.01	

**Table 6**

	<i>Dependent variable:</i>		
	EFR <sub>t</sub> – 1 month <sub>t</sub>	EFR <sub>t</sub> – 3 month <sub>t</sub>	EFR <sub>t</sub> – 6 month <sub>t</sub>
	(1)	(2)	(3)
log(debt_gdp)	0.057 (0.102)	–0.105 (0.136)	–0.321 (0.220)
Constant	–0.178 (0.447)	0.495 (0.596)	1.361 (0.963)
Observations	40	40	40
R <sup>2</sup>	0.008	0.015	0.053

*Notes:* "1 month", "3 month", and "6 month" represents the yield of each maturities Treasury bonds. \*p<0.1; \*\*p<0.05; \*\*\*p<0.01

lems, I derive a new guess for the policy functions. The first-order conditions involve the numerical derivative of the expectations (50)-(52) with respect to  $b_t$  and  $d_t$ . In consolidated model, the new policy functions are obtained. In the unconsolidated model, if  $H_t < H^*$ , set  $H_t = H^*$  and solve for the choice variables. This delivers a new guess.

Step3: Compute the expectations given the new policy functions. Repeat step2 until the guessed policy functions and new policy functions are converged.

This paper focuses on optimal policy under discretion. Although it would be interesting to solve for the optimal policy under commitment, doing so would involve solving a model with six state variables: the shock, reserves, bonds, and three Lagrange multipliers for the forward-looking equations (Marcet and Marimon, 2019). This significantly increases computational complexity, making it highly challenging.

## **Appendix D Initial conditions and transition dynamics after shocks**

The goal of this section is to understand how the initial levels of reserves and bonds affect the dynamics after a shock. In section 5, the economy does not start with steady-state levels of reserves and bonds. For the cost-push and productivity shocks, the economy starts with reserves that motivate the central bank to reduce reserves and require transfers from the Treasury. For the government spending shock, the economy starts with a large amount of bonds, in which case the Treasury does not smooth taxes by issuing additional bonds.

Section D.1 examines the dynamics following a shock when the economy starts from a steady state. In this scenario, the difference between the consolidated and unconsolidated models is smaller than in the results presented in section 5.

Section D.2 examines the impact of the central bank's assets. While the exercise in section 5 focuses on the impact of the central bank's liabilities, section D.2 examines the impact of the central bank's assets on fiscal backing. The effect of assets is ambiguous. The central bank's assets consist of long-dated assets, so when the nominal interest rate rises, the price of these assets falls significantly, resulting in capital losses. If the central bank holds large assets, it will incur larger



capital losses, which may require transfers from the Treasury. However, holding larger assets also means that the central bank could sell assets rather than rely on transfers from the Treasury. In addition, while a lower price for long-term bonds results in capital losses, it also allows the central bank to purchase assets at reduced prices, which benefits the central bank's asset position. Section [D.2](#) examines each of these mechanisms.

## **D.1 Steady-state as an initial condition**

### **D.1.1 Productivity shock**

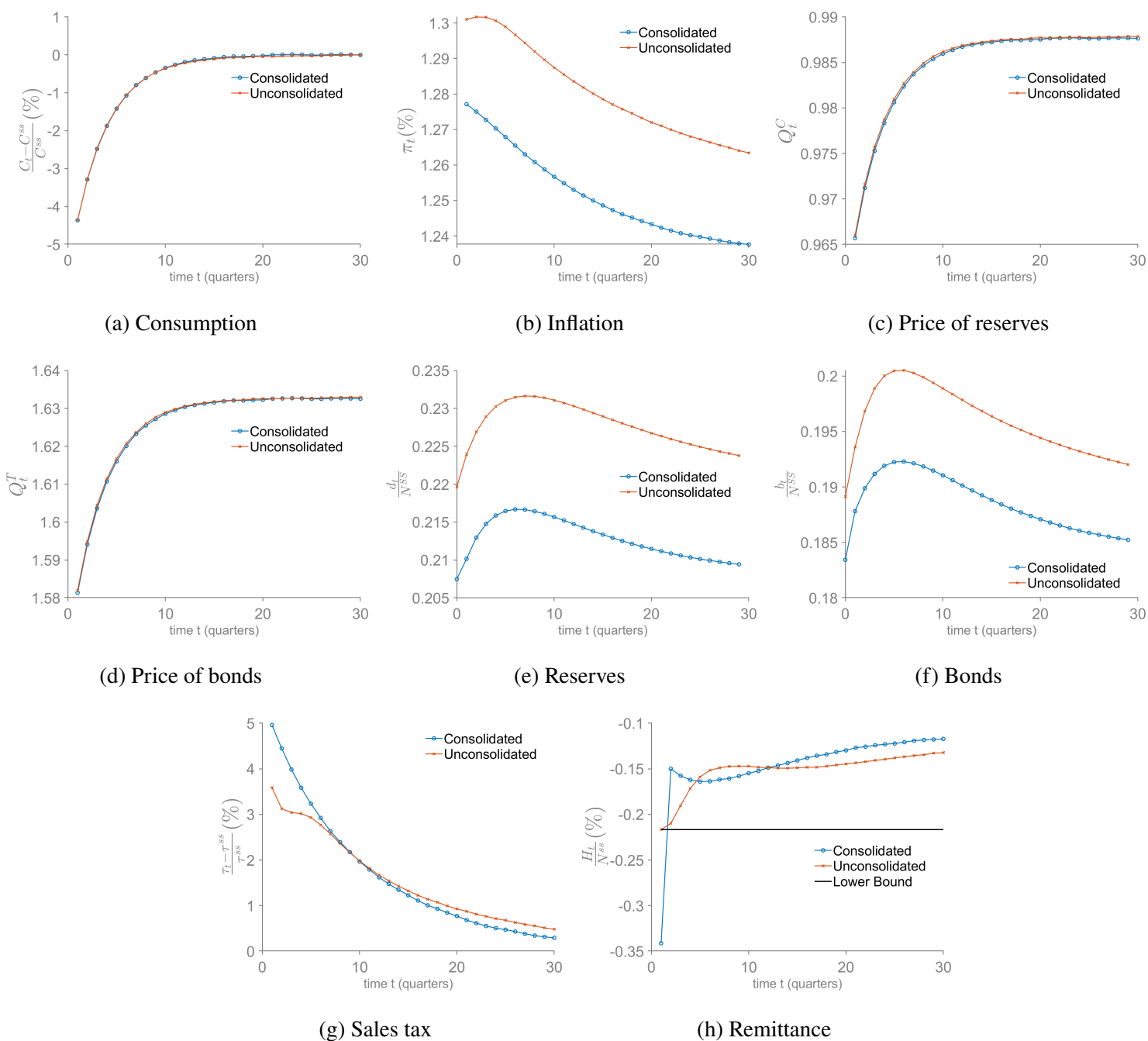
This section describes the dynamics after a positive public expenditure shock. The initial condition for reserves and bonds are steady-state level, unlike the exercise in section [5.2](#) where the economy starts from large reserves. The goal of this section is to show the difference between the unconsolidated and consolidated model depends on the initial conditions.

Figure [9](#) shows results. The key difference between [2](#) and [9](#) are how long remittance is binding in the unconsolidated model. In figure [9](#), reserves are smaller and resulting interest payment is smaller. The central bank does not require funds from Treasury a lot, so the lack of fiscal backing does not impact the dynamics a lot. In figure [2](#), initial reserves are large. Central bank needs funds to reduce it. In addition, a shock happens and nominal interest rate increases. That requires additional funds from Treasury. To balance the budget, central bank cannot raise nominal interest rate in the unconsolidated model. Consumption does not contract enough and inflation rate is not stabilized. As a result, the lack of fiscal backing makes a difference.

### **D.1.2 Public expenditure shock**

This section describes the dynamics after a positive public expenditure shock. The initial condition for reserves and bonds are steady-state level, unlike the exercise in section [5.3](#) where the economy starts from large bonds. The goal of this section is to show the difference between the unconsolidated and consolidated model depends on the initial conditions.

Figure [10](#) shows results. The key different from figure [10](#) and figure [3](#) is the dynamics for sales tax. In figure [10](#), the unconsolidated model shows that tax smoothing is limited; the initial response of tax rate in the unconsolidated model is larger than that in the consolidated model. However, the



**Figure 9: Productivity shock**

*Note:* This figure shows the dynamics of key variables upon the negative productivity shock by 5%. A productivity drops from 1 to 0.95. The horizontal axis is quarters. The vertical axis for consumption, prices of reserves, prices of bonds, reserves, bonds are the steady-state deviation represented by percent. The vertical axis for inflation rate is quarterly inflation rate in percent,  $\left(\left(\frac{P_t}{P_{t+1}}\right)^4 - 1\right) * 100$ . The vertical for remittance is ratio of remittance to GDP in percent  $\frac{H_t}{Y_t} * 100$ . The blue line represents the outcomes in the consolidated model. The red line represents the outcomes in the unconsolidated model.

overshooting of tax rate in the unconsolidated model is smaller in figure 10 than that in figure 3. This is because Treasury holds relatively smaller bonds in exercise of figure 10. Treasury has more capacity to issue bonds more, and can smooth tax even though support from central bank is limited.

## D.2 Role of central bank's assets

### D.2.1 Productivity shock

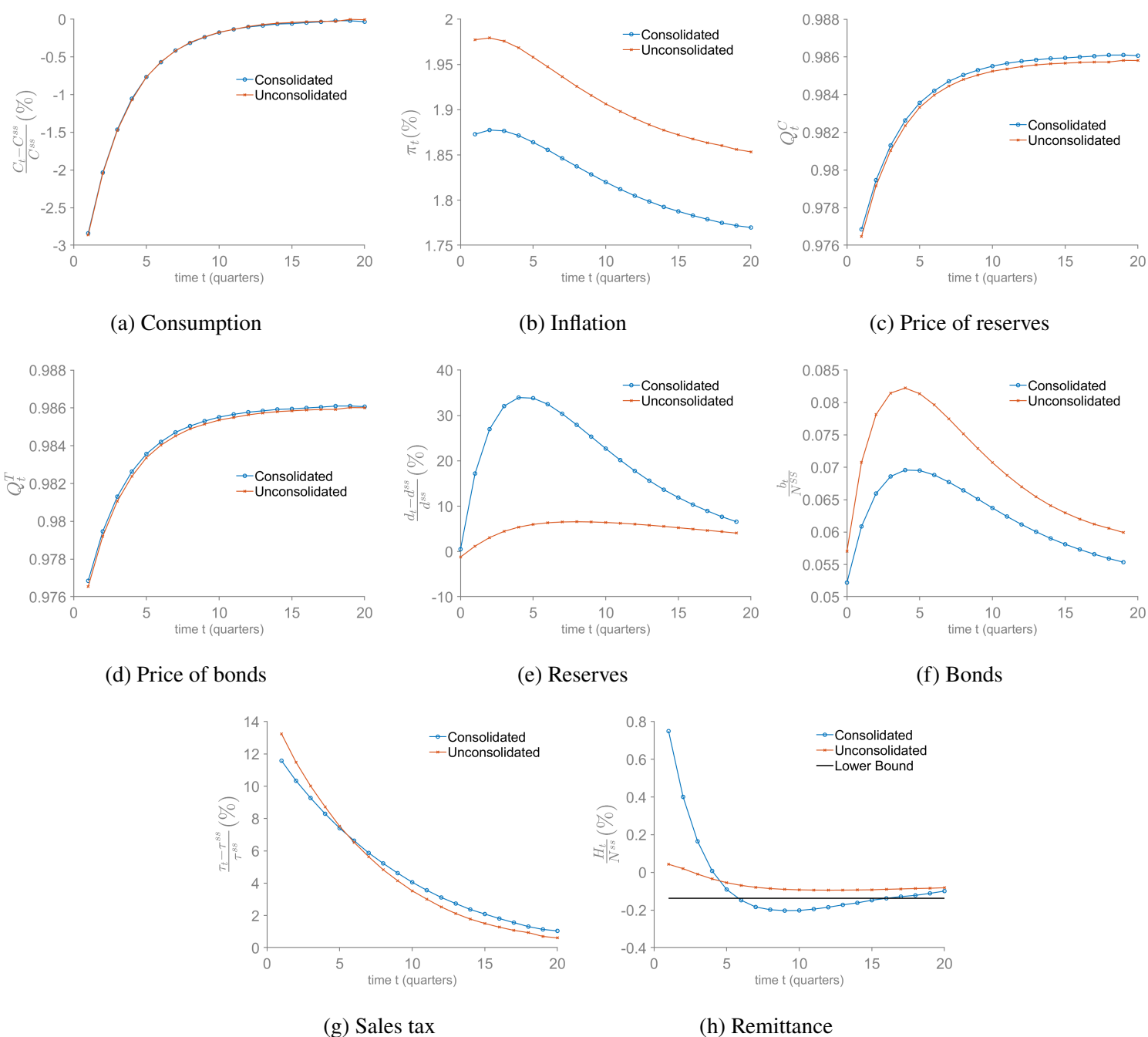
This section aims to understand the role of central bank's assets as an initial condition. The central bank's asset has an ambiguous impact on the budget upon the shock. Suppose central bank has larger assets than steady-state value. When the nominal interest rate increases, the price of long-duration bonds drops more. This leads to capital loss for central bank. As central bank holds larger assets, the capital loss is larger. In contrast, larger asset means that central bank can sell assets when its budget is tightened. That help central bank's budget.

Figure 11 shows the transition dynamics following a negative productivity shock, with initial conditions of larger reserves and fewer bonds. After the shock, the central bank holds fewer bonds as assets. The difference between the consolidated and unconsolidated models is more pronounced here than in Figure 2. With fewer assets, the central bank needs to increase its asset holdings. To purchase assets, transfers from the Treasury are required, but these are constrained. Consequently, the central bank issues more reserves to finance asset purchases, resulting in excess reserves. Since households are unwilling to absorb the excess reserves, the central bank aims to lower the nominal interest rate, thereby amplifying the difference between the two models.

## Appendix E Size of shock and reserves as an initial condition

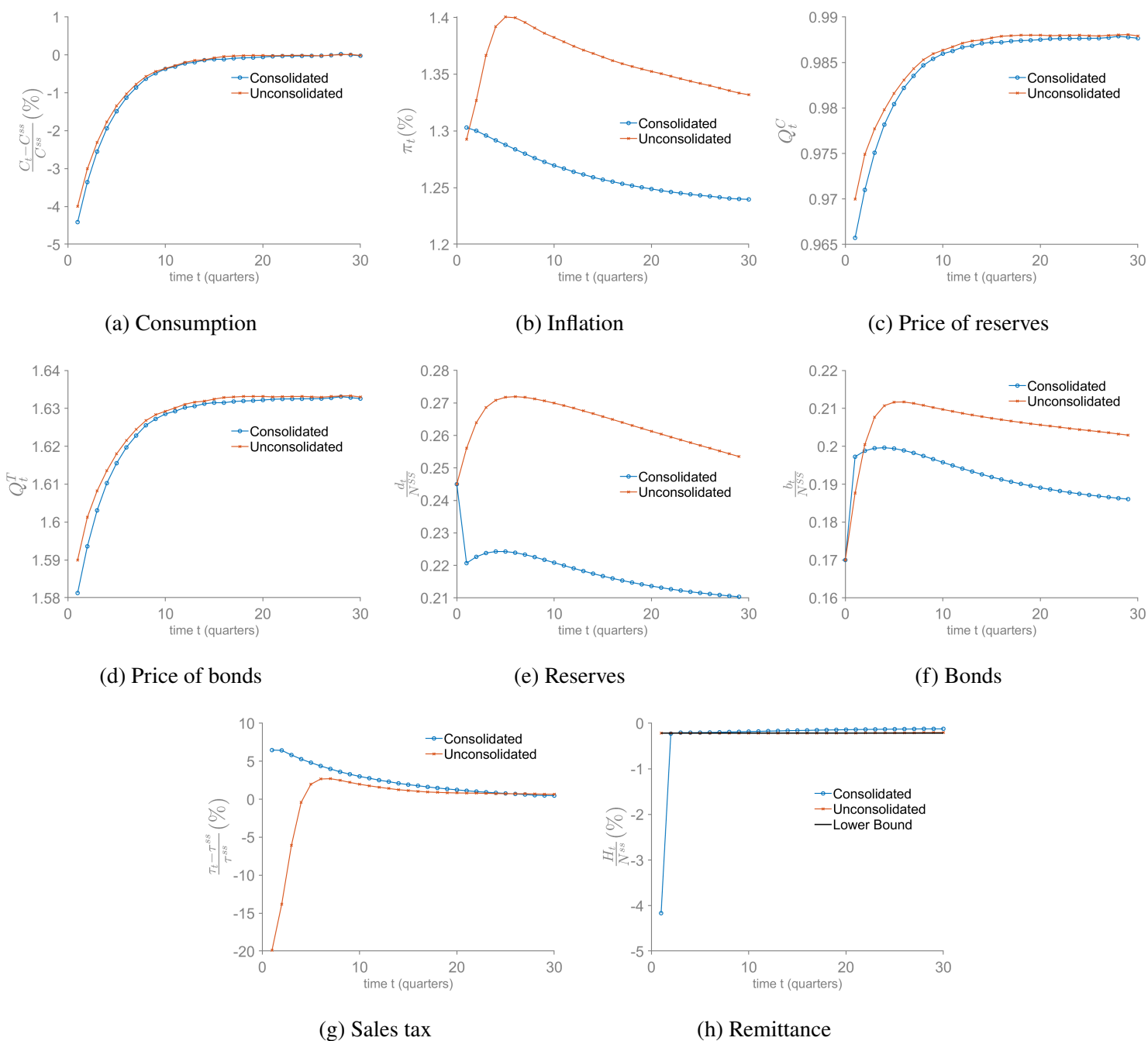
### E.1 Cost-push shock

**Size of shock** This paragraph does the same exercise as in section 5.4 and replace the shock by cost-push shock. Figure 12 illustrates the difference in inflation between the consolidated and unconsolidated models for various shock sizes. I plot  $\pi_t^{unc} - \pi_t^{con}$ , where  $\pi_t^{unc}$  is the annualized inflation rate (in percentage points) for the unconsolidated model, and  $\pi_t^{con}$  is the same for the



**Figure 10: Public expenditure shock**

*Note:* This figure shows the dynamics of key variables upon the positive public expenditure shock by 2%. The horizontal axis is quarters. The vertical axis for consumption, prices of reserves, prices of bonds, reserves, bonds are the steady-state deviation represented by percent. The vertical axis for inflation rate is annualized inflation rate in percent,  $\left( \left( \frac{P_t}{P_{t+1}} \right)^4 - 1 \right) * 100$ . The vertical for remittance is ratio of remittance to GDP in percent  $\frac{H_t}{Y_t} * 100$ . The blue line represents the outcomes in the consolidated model. The red line represents the outcomes in the unconsolidated model.

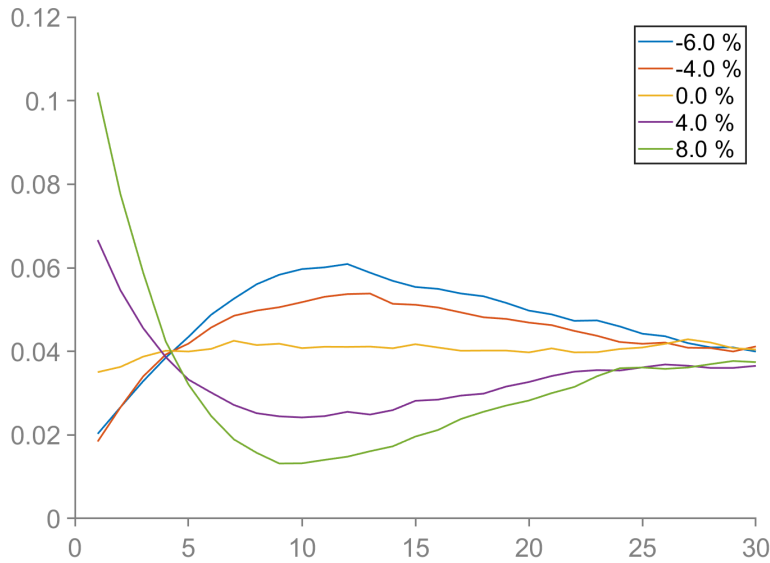


**Figure 11: Productivity shock**

*Note:* This figure shows the dynamics of key variables upon the negative productivity shock by 5%. A productivity drops from 1 to 0.95. The horizontal axis is quarters. The vertical axis for consumption, prices of reserves, prices of bonds, reserves, bonds are the steady-state deviation represented by percent. The vertical axis for inflation rate is annualized inflation rate in percent,  $\left( \left( \frac{P_t}{P_{t+1}} \right)^4 - 1 \right) * 100$ . The vertical for remittance is ratio of remittance to GDP in percent  $\frac{H_t}{Y_t} * 100$ . The blue line represents the outcomes in the consolidated model. The red line represents the outcomes in the unconsolidated model.

consolidated model. The inflation rate is simulated based on this exogenous shock, with the same exercise conducted for shocks of 8%, 4%, 0%, -4%, and -6%.

Figure 12 also shows that the difference of inflation between the two models is large when the size of shock is large. When the shock increases wage mark-up by 8%, the difference of inflation is 0.1% at  $t = 1$ . In contrast, the shock increases wage mark-up by 4%, the difference is 0.06% at  $t = 1$ . As in the results of section 5.4, the larger shock leads to larger difference of inflation between the two models.



**Figure 12:** Difference in inflation between consolidated and unconsolidated model for cost-push shock

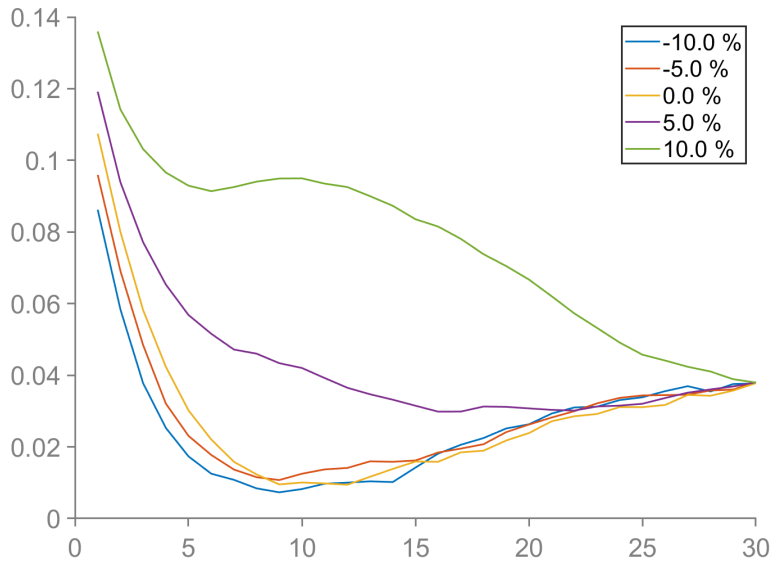
Note: This figure shows the difference in inflation between the consolidated and unconsolidated models for various shock sizes. The horizontal axis represents time, and the vertical axis shows  $\pi_t^{unc} - \pi_t^{con}$ , where  $\pi_t^{unc}$  is the annualized inflation rate (in percentage points) for the unconsolidated model, and  $\pi_t^{con}$  is the same for the consolidated model. Different lines represent different shock sizes. For example, a 8% positive cost-push shock occurs at time  $t = 1$  and follows an AR(1) process. I simulate the inflation rate based on this exogenous shock. The same exercise is conducted for shocks of 8%, 4%, 0%, -4%, and -6%.

**Reserves as an initial condition** This section performs the same exercise as in section 5.5 and replaces the shock with a cost-push shock. Figure 13 illustrates the difference in inflation between the consolidated and unconsolidated models for different levels of reserves as initial condition. I plot  $\pi_t^{unc} - \pi_t^{con}$ , where  $\pi_t^{unc}$  is the annualized inflation rate (in percentage points) for the unconsolidated model, and  $\pi_t^{con}$  is the same for the consolidated model. The inflation rate is simulated based on the

positive cost-push shock that increases the wage premium by 8%, with the same exercise performed for different levels of reserves. The initial conditions include reserves and bonds, with different levels of reserves: 10% above steady state, 5% above steady state, 5% below steady state, and 10% below steady state (all values are expressed as deviations from steady state).

Figure 13 shows that larger reserves in the initial condition lead to larger inflation differences between the two models. For example, if initial reserves are 10% higher than the steady state,  $\pi_t^{unc} - \pi_t^{con}$  at  $t = 1$  is 0.14%. In contrast, if the initial reserves are at the steady state level,  $\pi_t^{unc} - \pi_t^{con}$  at  $t = 1$  is 0.11%.

In particular, when the initial reserves are larger, the difference between the two models is larger. For example, if initial reserves are at steady state,  $\pi_t^{unc} - \pi_t^{con}$  at  $t = 20$  is 0.02%, which means the difference is smaller. In contrast, if initial reserves are 10% higher than steady state,  $\pi_t^{unc} - \pi_t^{con}$  at  $t = 20$  is still 0.06%. As initial reserves increase, the difference between the two models persists.



**Figure 13:** Difference in inflation between consolidated and unconsolidated model for productivity shock

Note: This figure shows the difference in inflation between the consolidated and unconsolidated models for various initial reserves. The horizontal axis represents time, and the vertical axis shows  $\pi_t^{unc} - \pi_t^{con}$ , where  $\pi_t^{unc}$  is the annualized inflation rate (in percentage points) for the unconsolidated model, and  $\pi_t^{con}$  is the same for the consolidated model. Different lines represent different initial reserves. The exercise is conducted for shocks of 10% above the steady state, 5% above the steady state, 5% below the steady state, and 10% below the steady state (all values are expressed as deviations from the steady state)